



Skiathos Boutique
Residence



DESIGNED WITH YOU IN MIND



BOUTIQUE LIVING LIMASSOL STYLE

Skiathos Boutique

Welcome to Skiathos Boutique Residence, a high-quality, stylish new development in the heart of Limassol.

Whether you are looking for a stylish new home or a smart investment opportunity, Skiathos Boutique Residence offers the perfect blend of style and practicality.

A BOUTIQUE LIFESTYLE, DESIGNED WITH YOU IN MIND.



DESIGNED WITH YOU IN MIND



Skiathos Boutique

All images used are for illustrative purposes only, final outcome may differ from image shown.





LIMASSOL: THE CITY THAT HAS IT ALL



From sophisticated dining and stunning beaches to historical landmarks and adventurous hiking - welcome to Limassol, the city that has it all.

Relax on the beach - Lady's Mile, an 8km sandy beach, is a well-liked spot among locals with a salt-lake adding to its unique scenery.

Visit the old town - one of the most fascinating parts of the city to explore, with Limassol Castle on its main square.

Hike in the hills - discover the tiny village of Platres, a favored spot for nature-lovers, high up in the Troodos.

Discover new flavors - try the hip restaurants and cafés around the old town center, and at the contemporary marina.



SKIATHOS BOUTIQUE

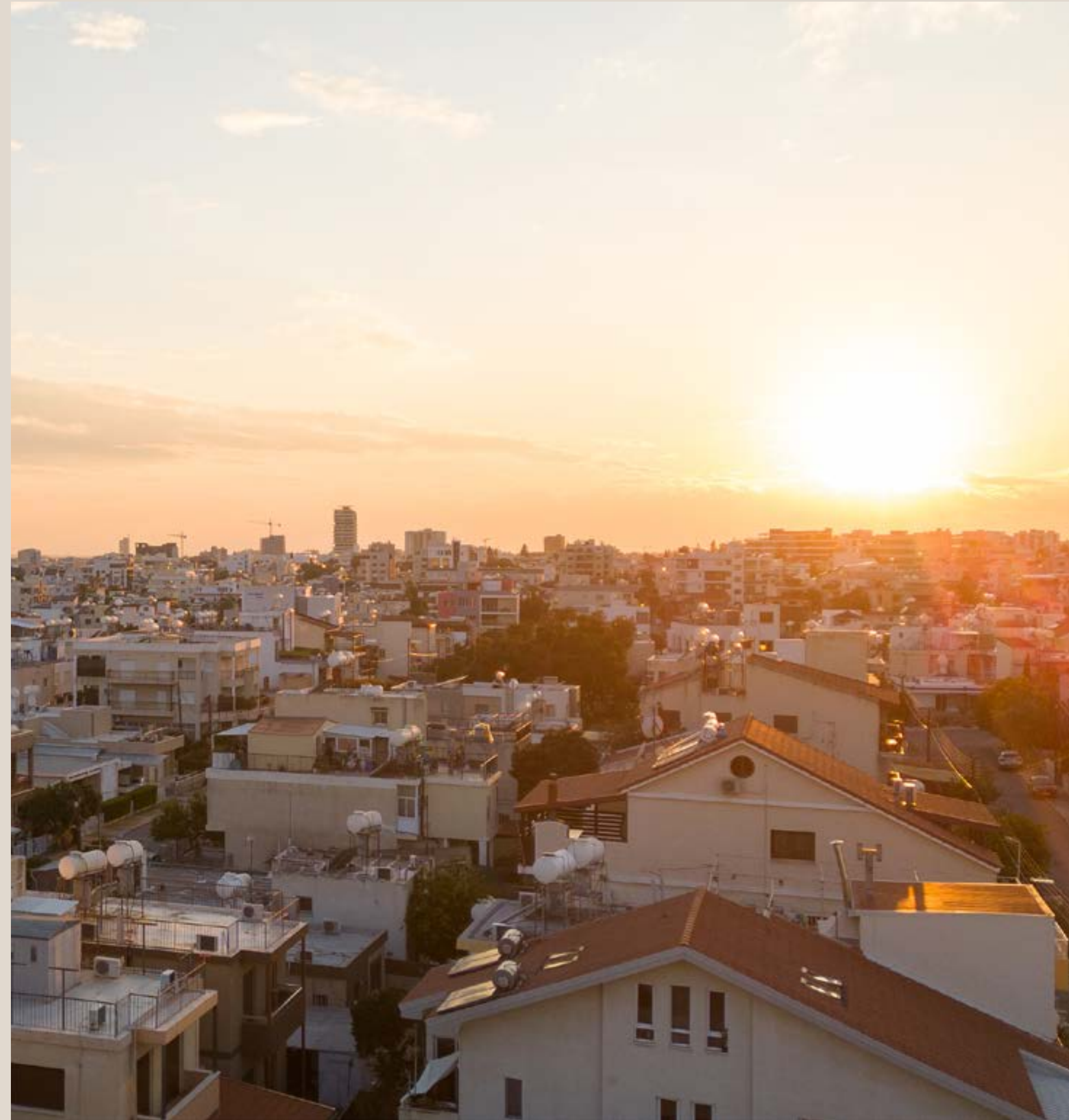
DESIGNED WITH YOU IN MIND

Skiathos Boutique

Skiathos Boutique is an elite gated contemporary development which consists of luxurious spacious apartments and penthouses with sophisticated design complimented with high standards of finish.

Each residence enjoys spacious verandas with city views, quiet surroundings and cosy planning solutions will pleasantly surprise those who value true comfort and style. The penthouses luxuriate in panoramic sea views accompanied with their own private roof terraces.



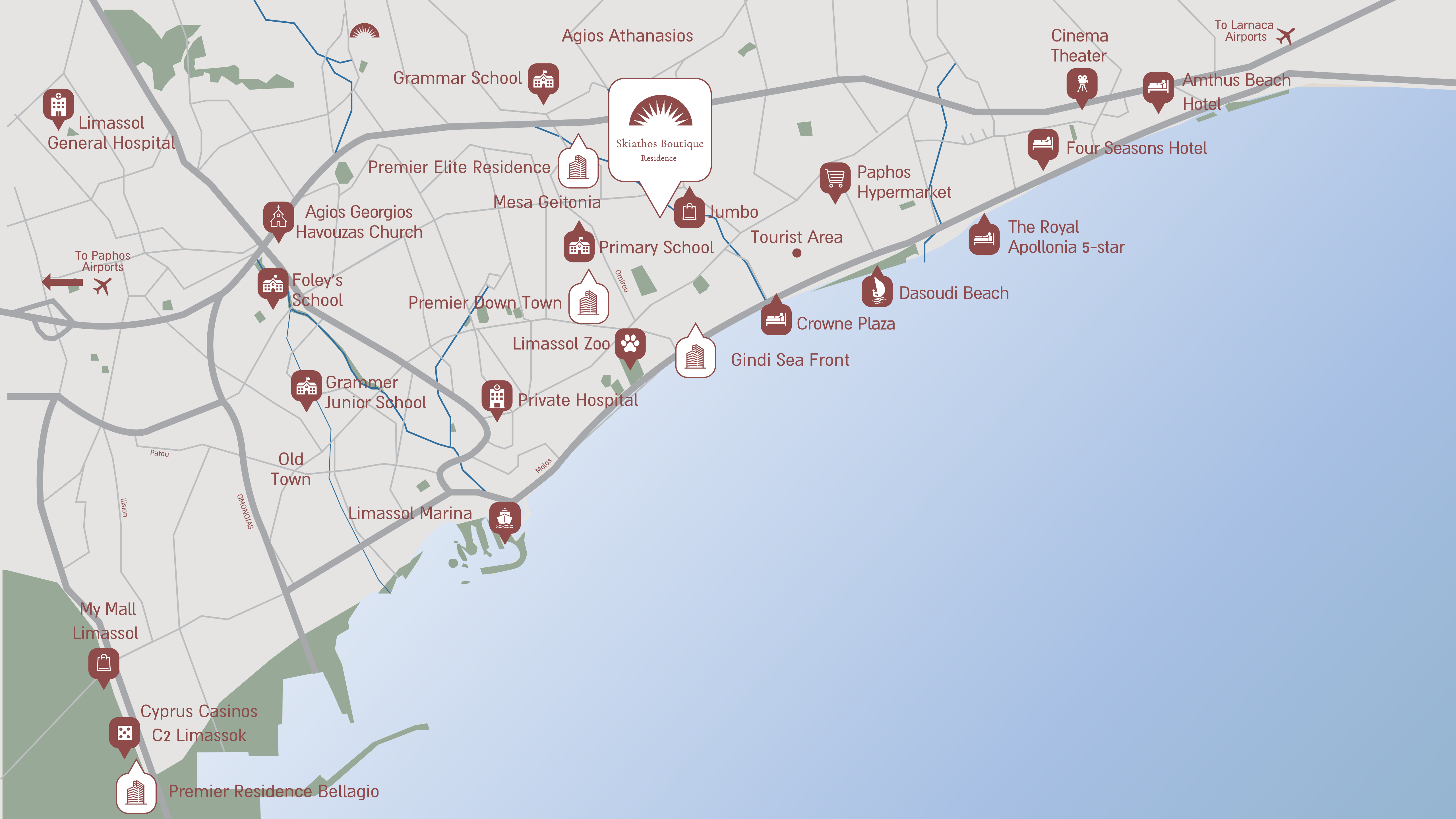


EVERYTHING JUST MINUTES AWAY

Skiathos Boutique

Experience Limassol in this prime location in the centric and quiet neighborhood of Mesa Geitonia, just 1,300m from the beach, with easy access to everything the city has to offer.

Everything is just minutes away, from fine-dining and shopping, to a walk by the sea. Easy access to the major roads makes it effortless to go exploring the rest of Limassol.



Limassol General Hospital

Grammar School

Agios Athanasios

Skiathos Boutique Residence

Premier Elite Residence

Mesa Geitonia

Jumbo

Paphos Hypermarket

Cinema Theater

Amthus Beach Hotel

Four Seasons Hotel

Agios Georgios Havouzas Church

Primary School

Tourist Area

The Royal Apollonia 5-star

To Paphos Airports

Foley's School

Premier Down Town

Limassol Zoo

Crowne Plaza

Dasoudi Beach

Gindi Sea Front

Grammer Junior School

Private Hospital

Old Town

Limassol Marina

My Mall Limassol

Cyprus Casinos C2 Limassok

Premier Residence Bellagio



SIGNATURE FINISHES

Enjoy a range of high-end specs, including covered parking space for each apartment and lavish carpentry work. With the added security of a CCTV system, you can have peace of mind, knowing your home is perfectly protected.

Every apartment is delivered with top-standard signature finishes:

Laminate parquet
in rooms

Quality ceramic tiles
in bathrooms

Aluminum window
frames

Stylish entrance
doors

High-quality kitchen
cabinets

Top sanitary brands





MORE HIGH-END SPECS

- Modern architecture
- Spacious layouts
- Open plan Design
- VRV heating and cooling
- All master bedrooms with unsuited showers
- Zero Energy building/Class A Photovoltaics
- Quality bedroom cupboards
- Parking for tenants & visitors
- Dedicated storage room for each apartment





VARIETY OF CHOICES

FLAT	FLOOR	BEDROOMS	COVERED INTERNAL AREA (SQM)	COVERED VERANDA (SQM)	UNCOVERED/ROOF GARDEN (SQM)	PARKING
101	1	1	50	8	12	1
102	1	2	78	19	14	1
103	1	2	78	19	14	1
104	1	1	50	8	32	1
201	2	1	50	8	0	1
202	2	2	80	26	13	1
203	2	2	80	26	13	1
204	2	1	50	8	0	1
301 SEA VIEW	3	3	110	47	31	1
302 SEA VIEW	3	2	77	12	7	1
303	3	2	77	13	19	1
401 SEA VIEW	4	3	110	36	17 + 50 roof garden	1
402 SEA VIEW	4	3	111	32	37 + 30 roof garden	1

The areas stated above may slightly differ upon issuance of relevant authority permits



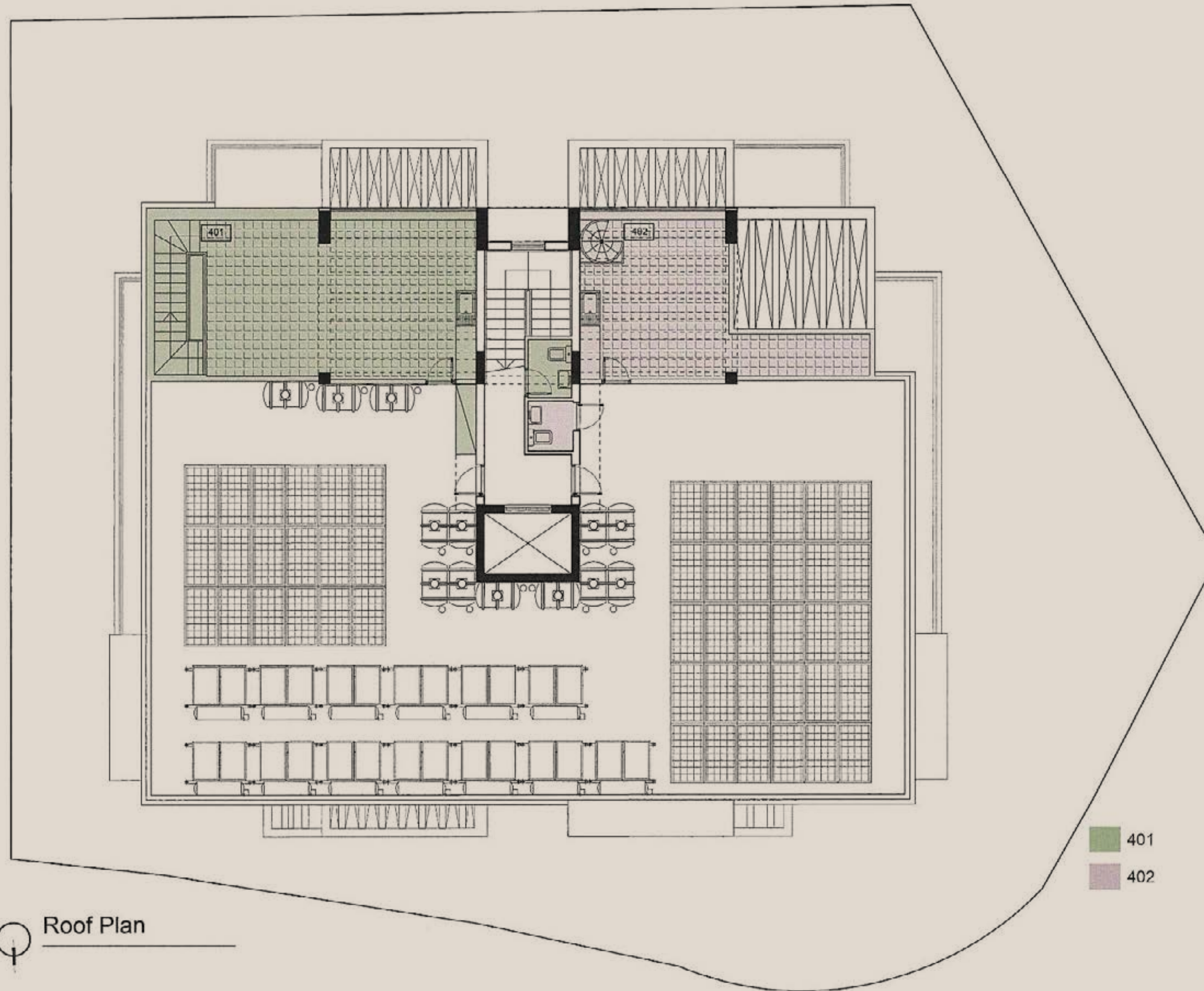




3rd Floor Plan

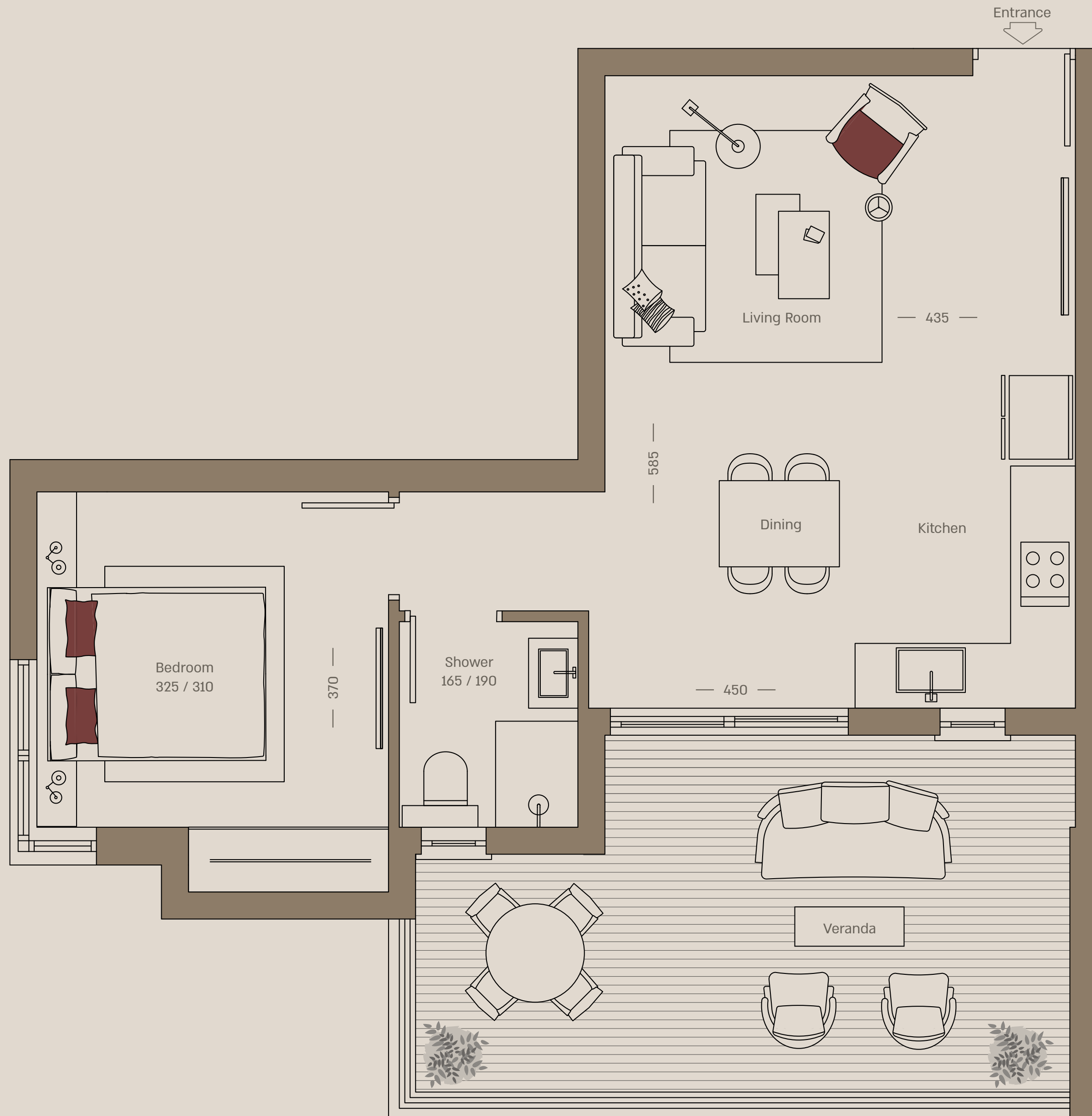


4th Floor Plan



Roof Plan

- 401
- 402



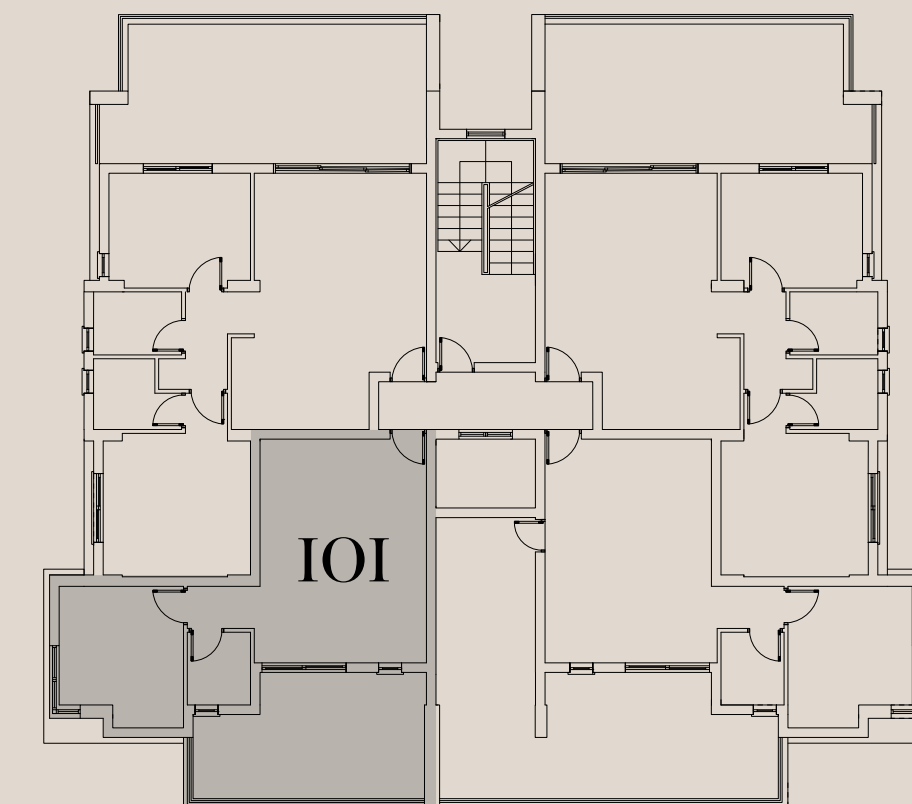
Apartment 101 | Floor 1 1 Bedroom

North-East

Covered internal area (sqm): 50

Covered veranda (sqm): 8

Uncovered garden (sqm): 12



Floor Plan





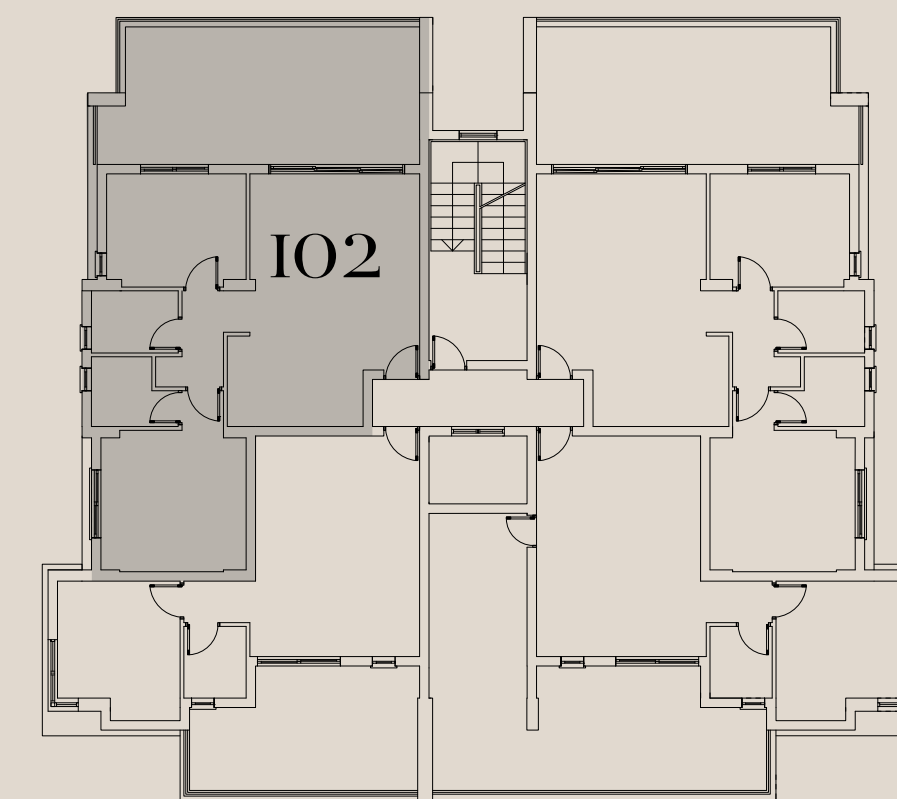
Apartment 102 | Floor 1 2 Bedroom

South-West

Covered internal area (sqm): 78

Covered veranda (sqm): 19

Uncovered garden (sqm): 14



Floor Plan





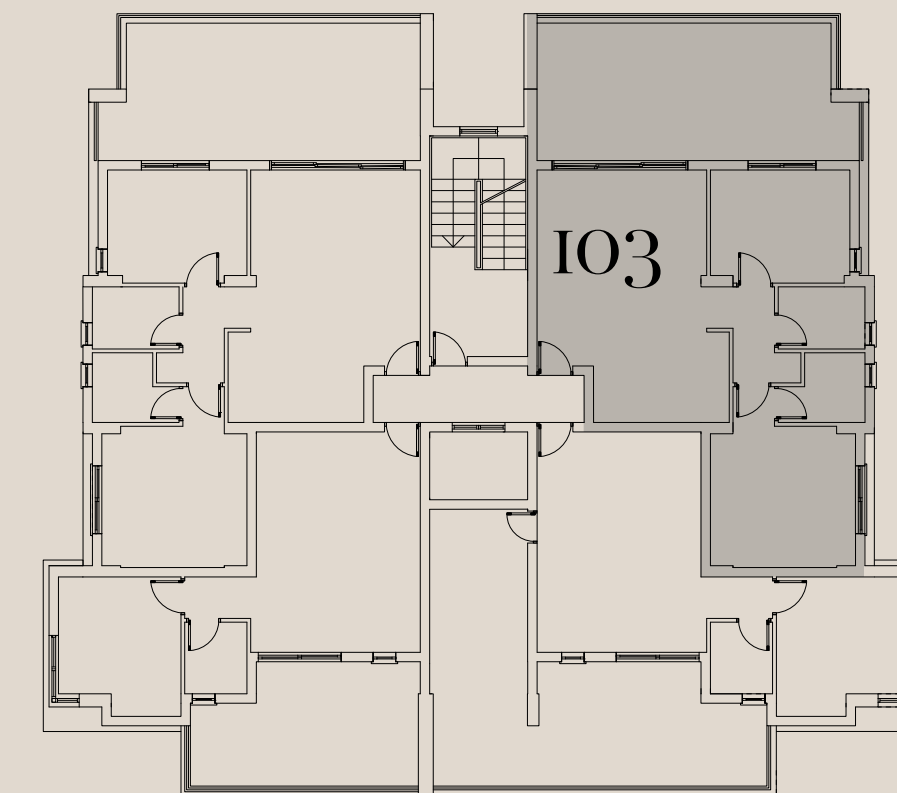
Apartment 103 | Floor 1 2 Bedroom

South-East

Covered internal area (sqm): 78

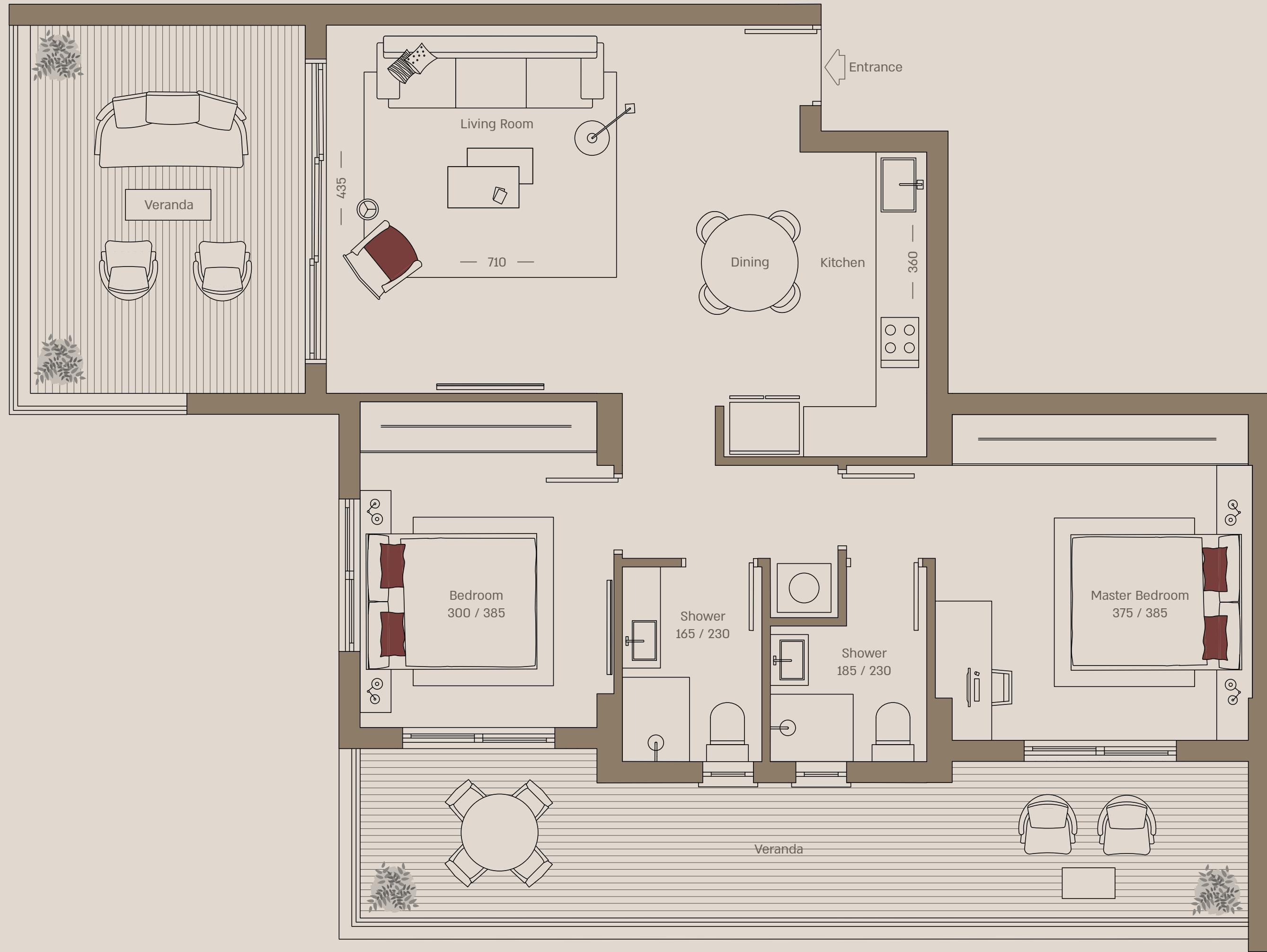
Covered veranda (sqm): 19

Uncovered garden (sqm): 14



Floor Plan





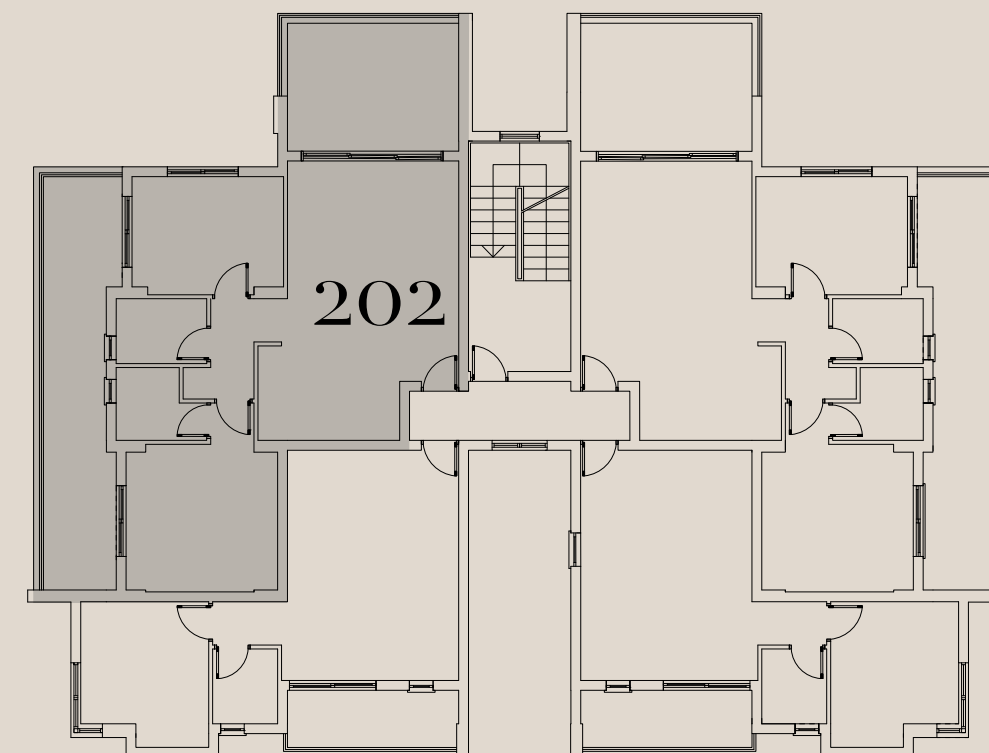
Apartment 202 | Floor 2 2 Bedroom

South-West

Covered internal area (sqm): 80

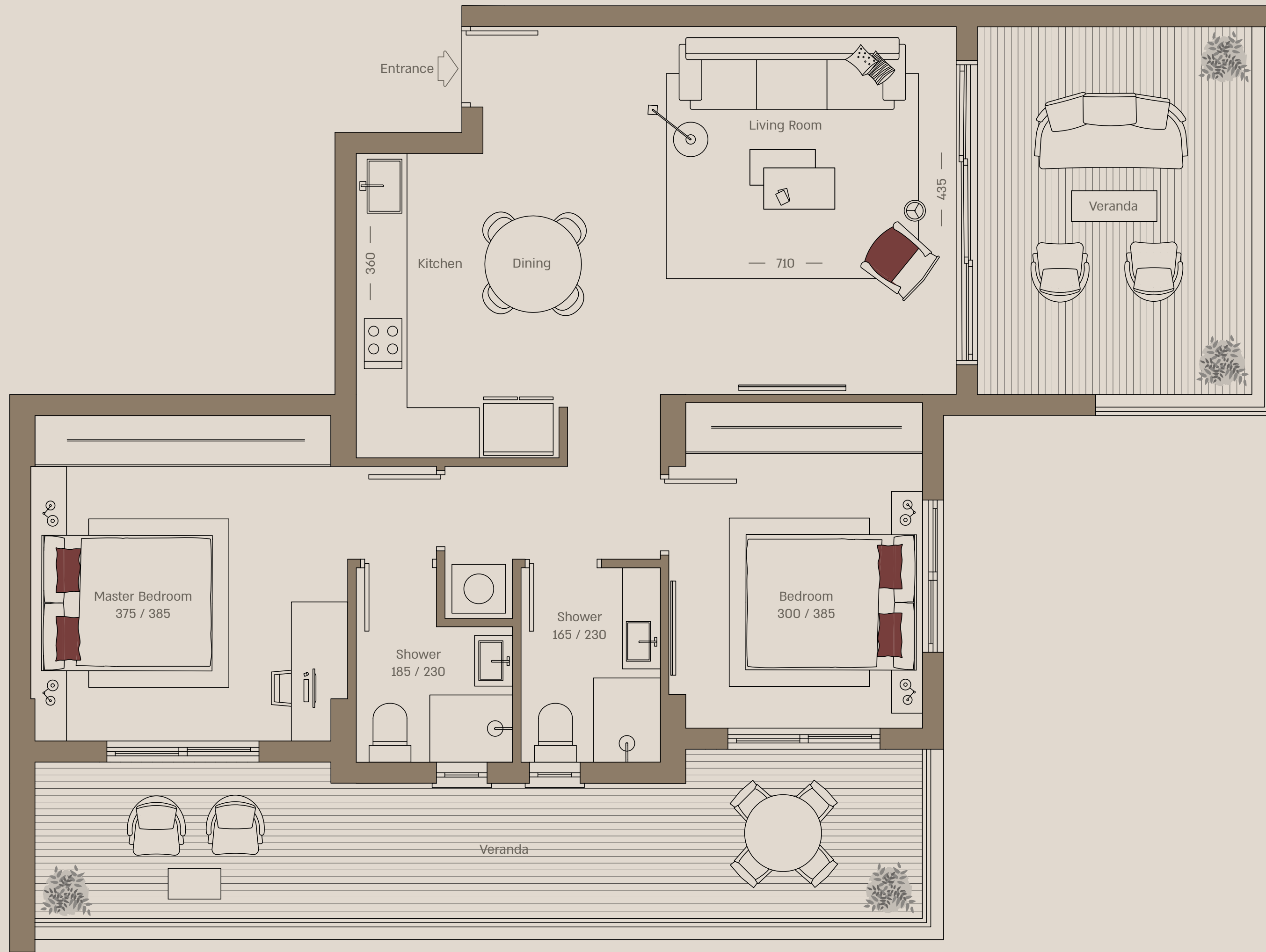
Covered veranda (sqm): 26

Uncovered garden (sqm): 13



Floor Plan





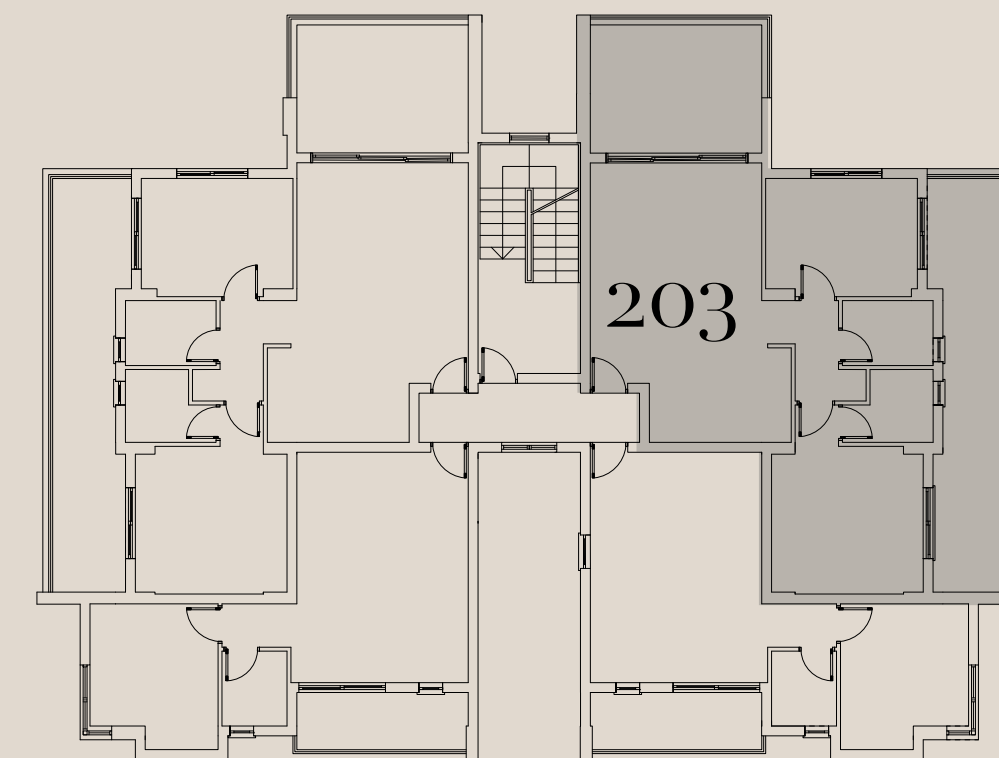
Apartment 203 | Floor 2 2 Bedroom

South-East

Covered internal area (sqm): 80

Covered veranda (sqm): 26

Uncovered garden (sqm): 13



Floor Plan





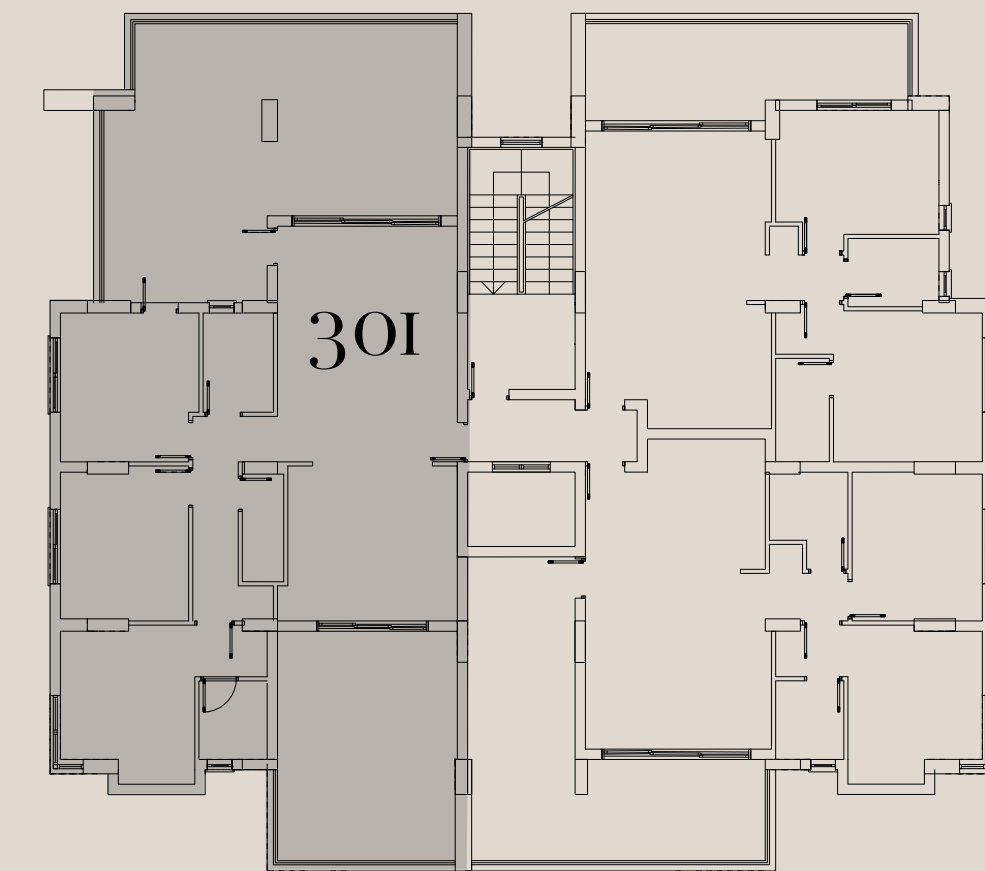
Sea View Apartment 301 | Floor 3 3 Bedroom

South-East-North

Covered internal area (sqm): 110

Covered veranda (sqm): 47

Uncovered garden (sqm): 31



Floor Plan





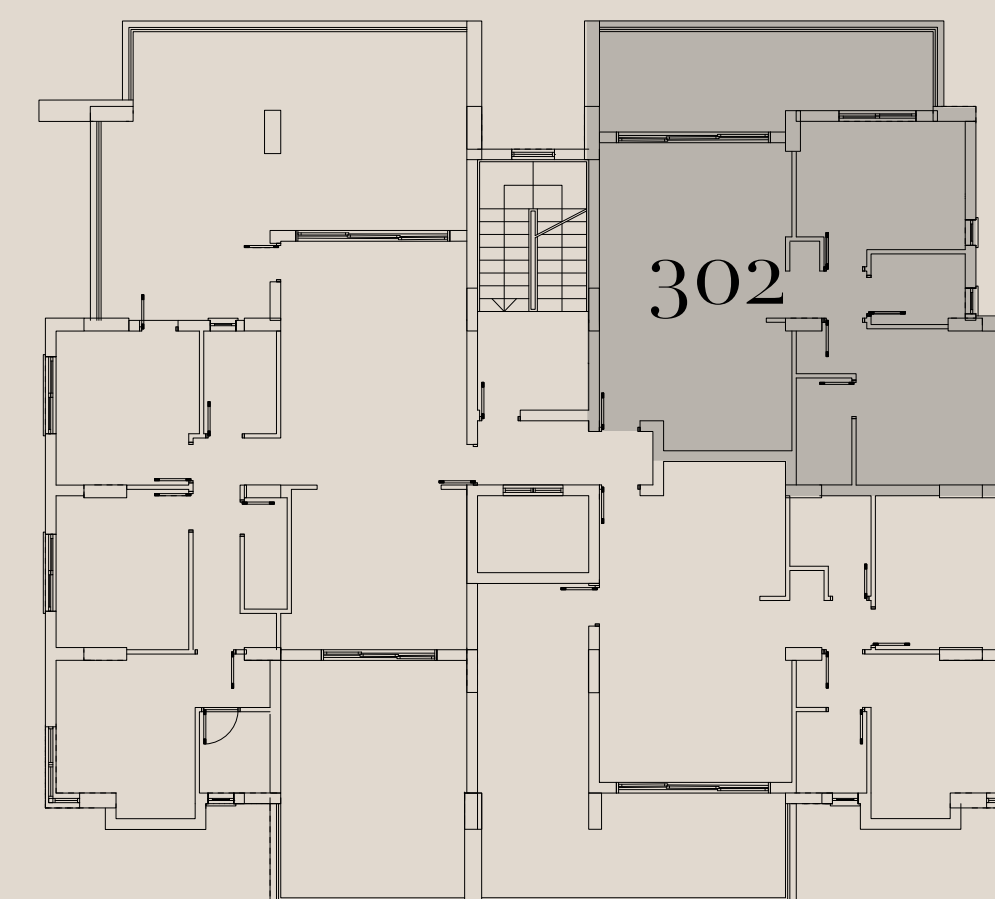
Sea View Apartment 302 | Floor 3 2 Bedroom

South-West

Covered internal area (sqm): 77

Covered veranda (sqm): 12

Uncovered garden (sqm): 7



Floor Plan





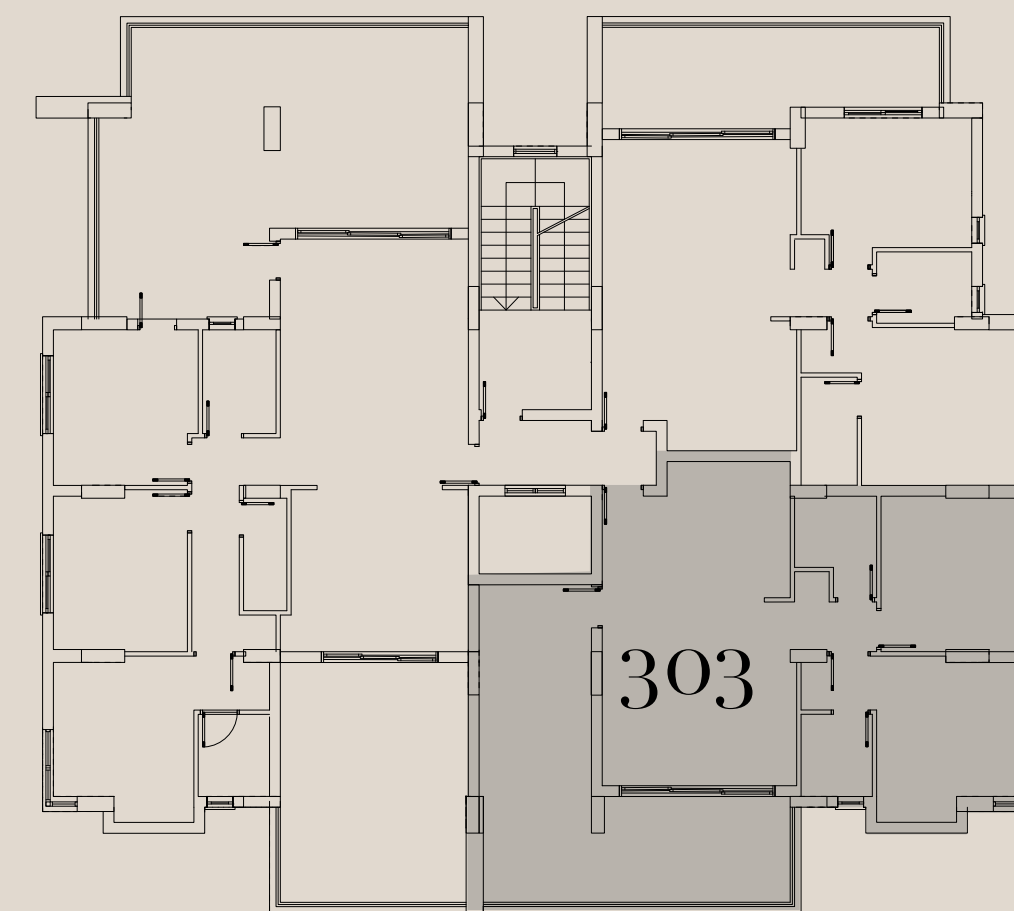
Apartment 303 | Floor 3 2 Bedroom

North-West

Covered internal area (sqm): 77

Covered Veranda (sqm): 13

Uncovered garden (sqm): 19

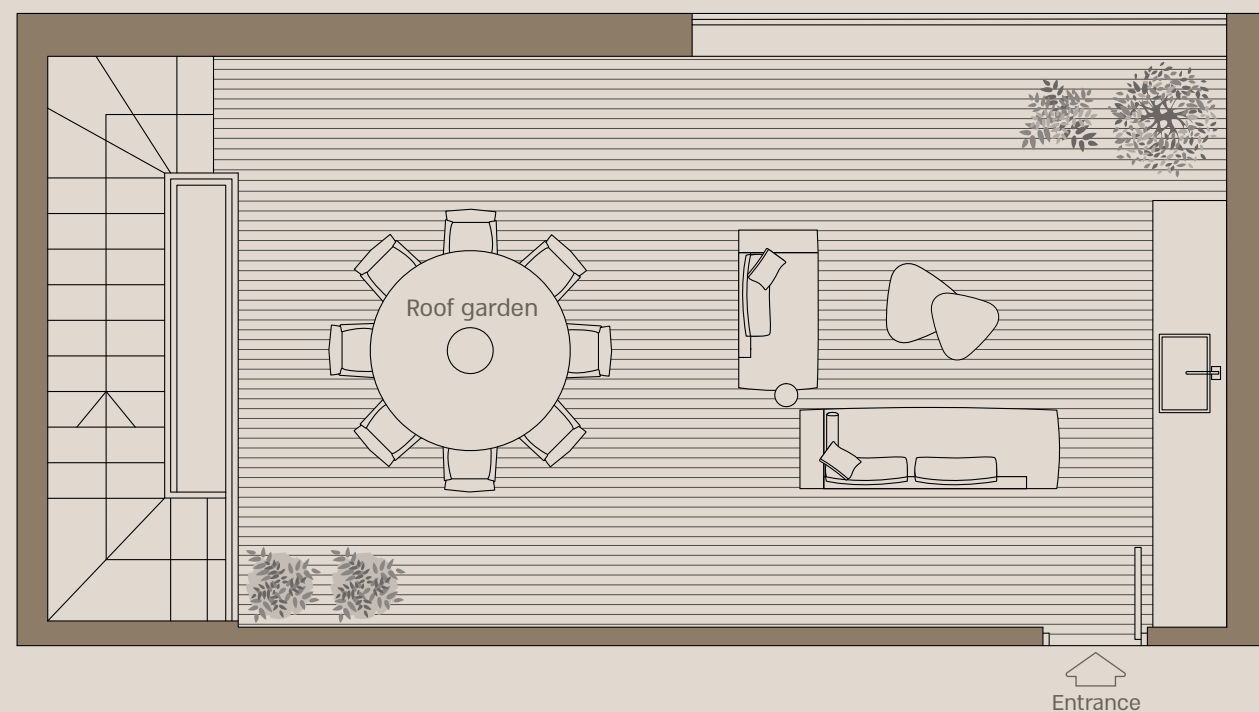


Floor Plan





Roof garden



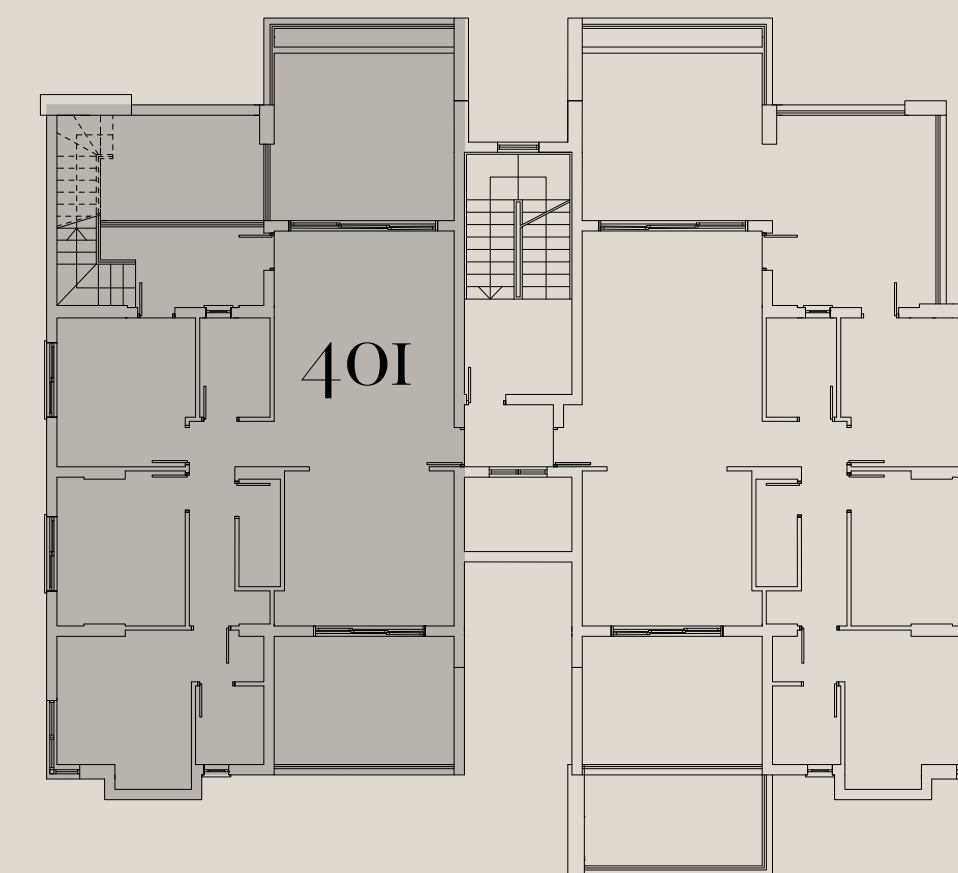
4 Floor



Sea View Apartment 401 | Floor 4 Penthouse 3 Bedroom

North-East-South
Covered internal area (sqm): 110
Covered veranda (sqm): 36
Uncovered garden (sqm): 17
Roof garden (sqm): 50

Skiathos Boutique

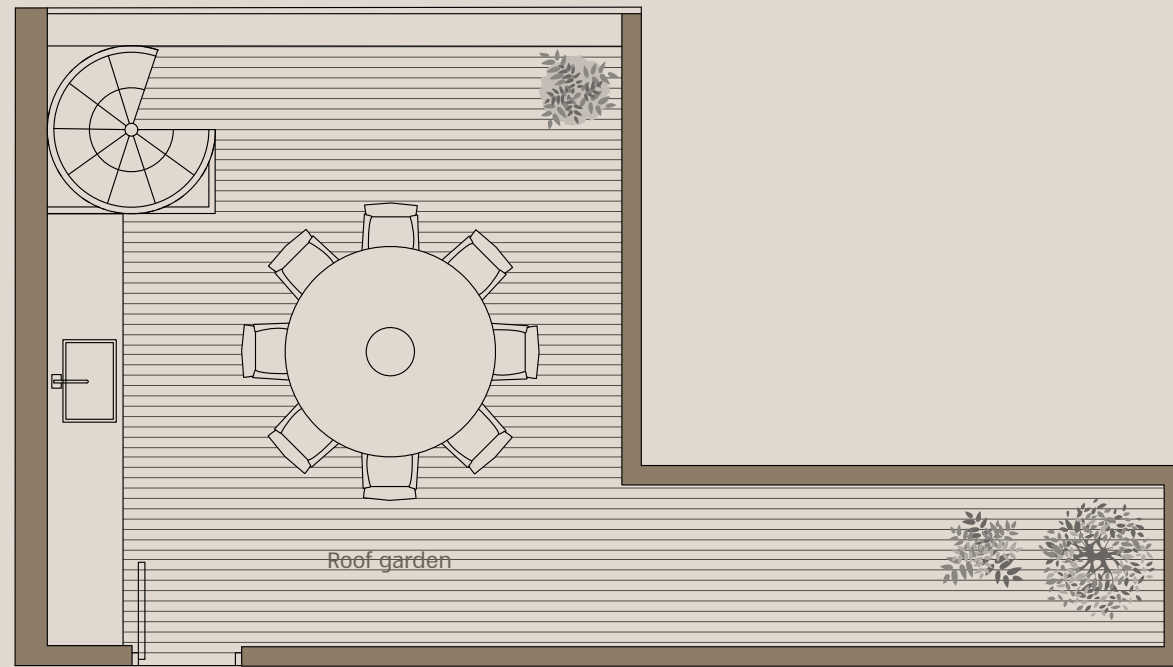


Floor Plan

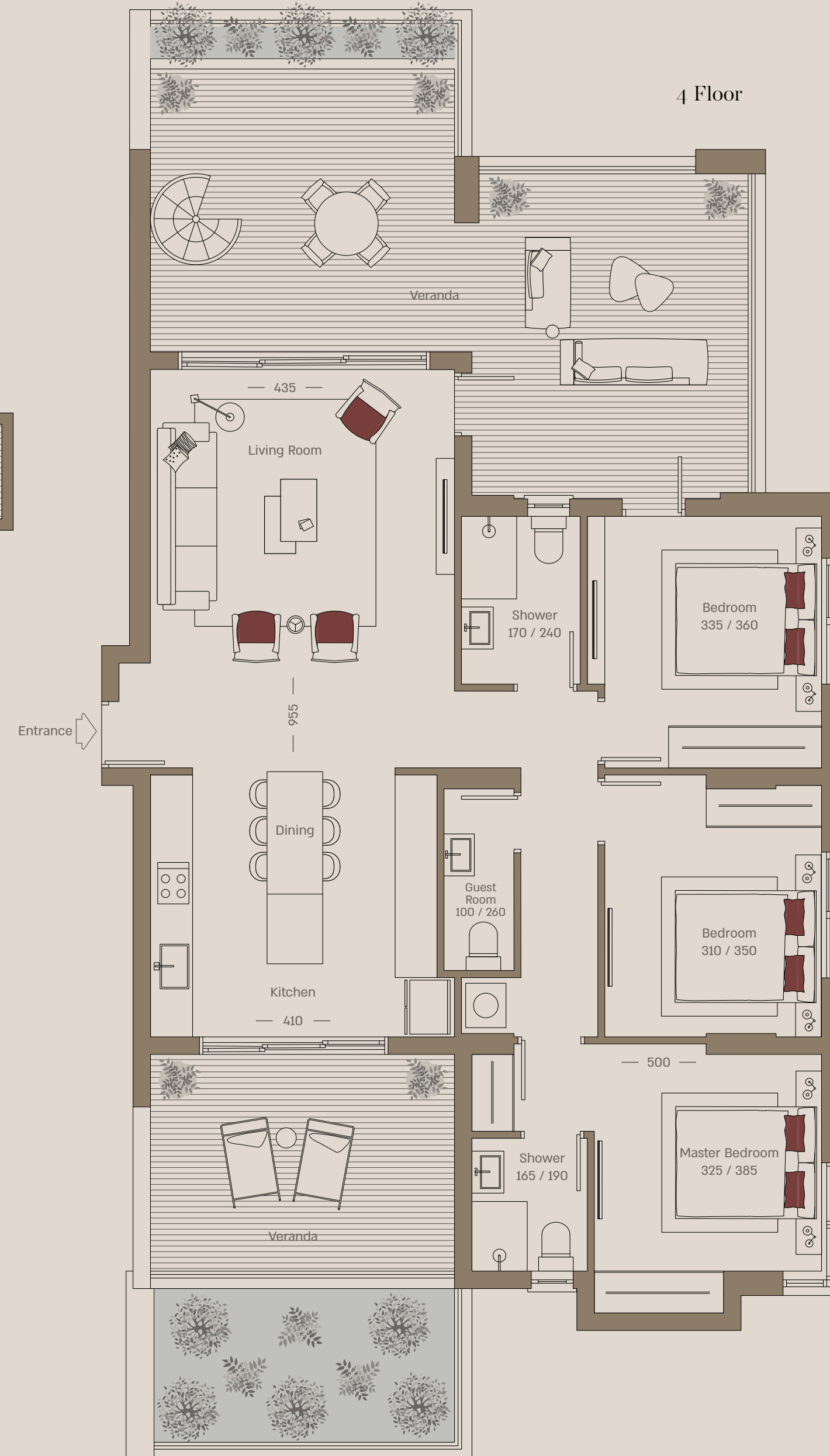




Roof garden



4 Floor



Sea View Apartment 402 | Floor 4 Penthouse 3 Bedroom

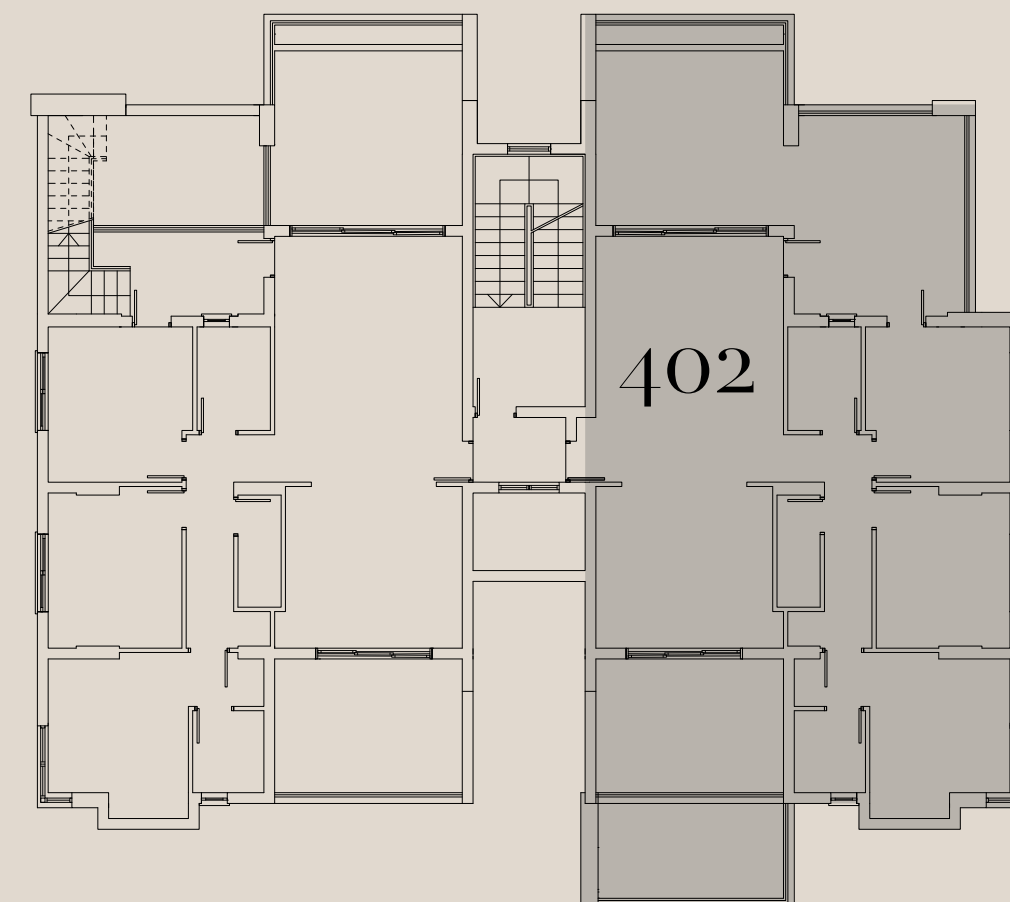
North-West-South

Covered internal area (sqm): III

Covered veranda (sqm): 32

Uncovered garden (sqm): 37

Roof garden (sqm): 30



Floor Plan





1 BEDROOM EXAMPLE

DESIGNED WITH YOU IN MIND



Skiathos Boutique



1 BEDROOM EXAMPLE

DESIGNED WITH YOU IN MIND



Skiathos Boutique

All images used are for illustrative purposes only, final outcome may differ from image shown.



2 BEDROOM EXAMPLE

DESIGNED WITH YOU IN MIND



Skiathos Boutique



2 BEDROOM EXAMPLE

DESIGNED WITH YOU IN MIND



Skiathos Boutique



PENTHOUSE 401

DESIGNED WITH YOU IN MIND



Skiathos Boutique



PENTHOUSE 401

DESIGNED WITH YOU IN MIND



Skiathos Boutique





PENTHOUSE 402

DESIGNED WITH YOU IN MIND



Skiathos Boutique



PENTHOUSE 402

DESIGNED WITH YOU IN MIND



Skiathos Boutique





PENTHOUSE 402

DESIGNED WITH YOU IN MIND



Skiathos Boutique





ROOFTOP

DESIGNED WITH YOU IN MIND



Skiathos Boutique

All images used are for illustrative purposes only, final outcome may differ from image shown.



ROOFTOP

DESIGNED WITH YOU IN MIND



Skiathos Boutique



THE TEAM



CGS Premier Development LTD provides Luxury Properties in the most sought-after areas of Limassol. CGS Premier is committed to delivering exceptional service to their clients, in each and every project. Over its many years of activity, the company has become a prominent brand in Cyprus, synonymous with high-end real estate.

Skiathos Boutique



Gindi Global is Gindi Holdings' global investment arm. The company has a proven track record of developing unique, high-profile buildings that embrace the cultural heritage of each site to deliver beautifully designed, professionally developed, and incredibly well-managed establishments from conception to completion, while emphasizing positive impact and sustainability.



THE TEAM



CGS Premier Development LTD provides Luxury Properties in the most sought-after areas of Limassol. CGS Premier is committed to delivering exceptional service to their clients, in each and every project. Over its many years of activity, the company has become a prominent brand in Cyprus, synonymous with high-end real estate.



Gindi Global is Gindi Holdings' global investment arm. The company has a proven track record of developing unique, high-profile buildings that embrace the cultural heritage of each site to deliver beautifully designed, professionally developed, and incredibly well-managed establishments from conception to completion, while emphasizing positive impact and sustainability.

CONTACT US

for any enquiries or private viewings please contact us at:

*5355

info@gindi-global.com

