



# Gindi Holdings

Gindi Holdings is one of Israel's leading real estate development companies, with a proven track record of success spanning decades. The company develops large scale residential projects in Israel, including mixed used and high end residential buildings in desirable areas.

Gindi Global, the international real estate investment arm of Gindi Holdings, aims to be a leader in its field beyond Israel: from meticulous location selection to partnerships with the best companies in the market. Our passion for excellence guides us at every stage to ensure our clients the ultimate living experience.

Our decades-long commitment to quality and customer satisfaction has earned us a reputation as a reliable partner in the real estate industry, with a commitment to delivering the best product.

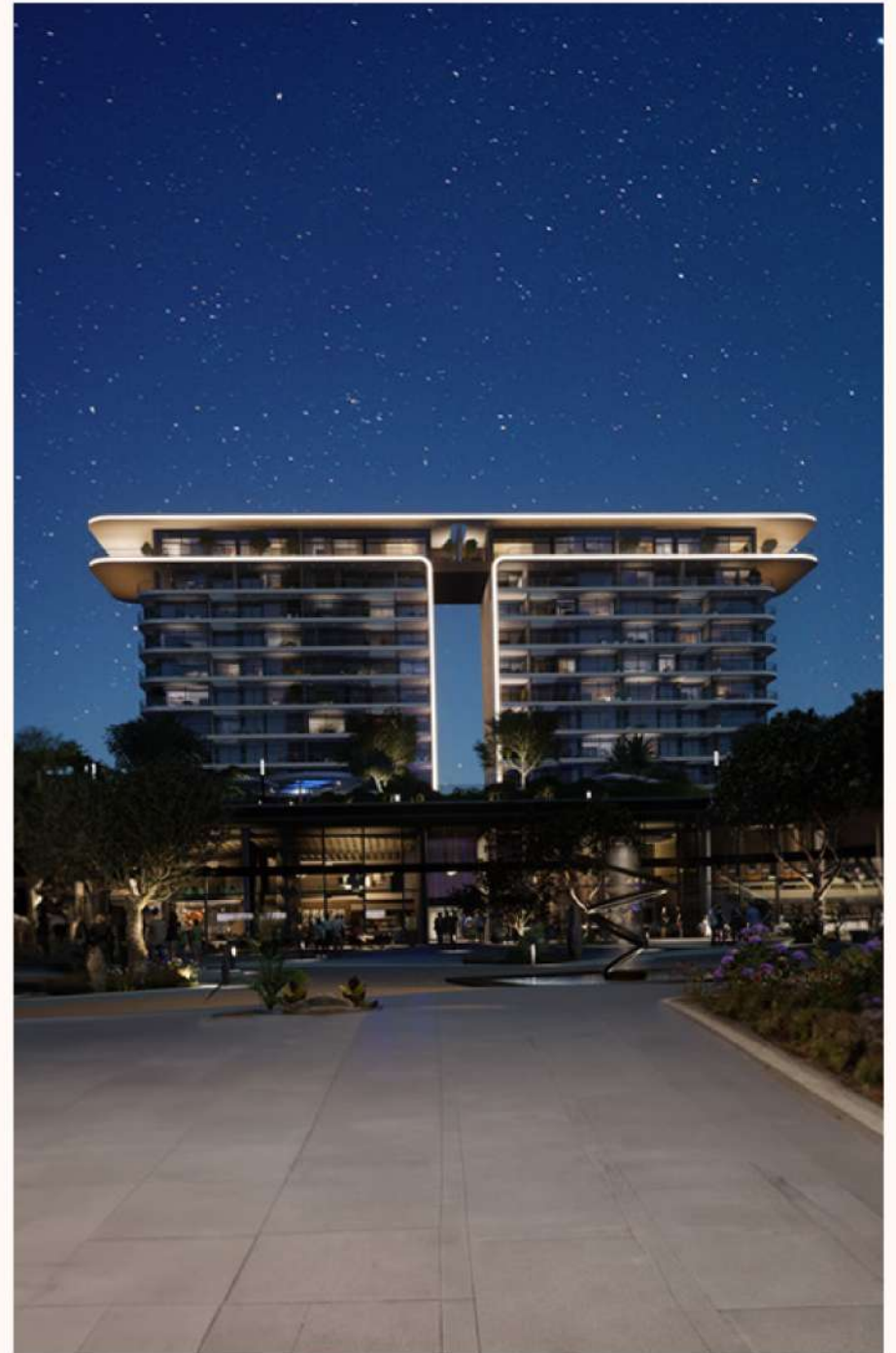




# TRIOLOGY EDITION

Gindi Collection Limassol

Gindi Global allows you to enjoy peace of mind even overseas and offers you peace of mind in purchasing an apartment with a full professional package that includes special financing conditions.





**T**rilogy is high living in every sense, a trio of landmark beachfront buildings surrounding a bustling inner plaza, right in the heart of Limassol's affluent waterfront. This is a place to live well, work hard and play, long after the sun dips beyond the sea's horizon. Trilogy is as much an experience as it is a destination, somewhere and something that gathers people together to share everything that's great about life on our sun-kissed shore. Brought to life by a world-class collaboration of architects, designers and developers, Trilogy is a unique opportunity to play a part in the city's ever-changing story and begin an exciting new chapter of your own.





# I LIVE

Trilogy blends the aspirational dream of high-end beachfront living, with the sophistication of urban cool, astonishing design flair as well as unsurpassed levels of finish.

- Apartments of discerning taste
- Spectacular layouts and sea views
- High standards of quality and design
- Member access to resident-only areas
- 24-hour security and concierge
- Private underground parking

# II WORK

Locating your business at Trilogy says a lot about its status and ambition. It's an epic location, a bold statement of creative spirit and geographical savvy.

- State-of-the-art office space
- Sea views from every desk
- Fast digital connectivity
- 24-hour maintenance and access control
- 24-hour security and concierge
- Private underground parking

# III PLAY

Trilogy's three distinct social areas offer resident-only facilities for secluded leisure and relaxation, as well as a lively, bustling, public space that can be enjoyed and experienced by everyone.

- Members' pool, bar, gym, spa, garden and children's play area
- Resident-only indoor pool, fitness suite and informal relaxation areas
- Restaurants, bars and shops for all





# ON THE SEAFRONT

## CYPRUS

From spectacular mountain peaks to beautiful beaches and cloudless skies, Cyprus has it all. Offering everything from complete tranquility to exuberant nightlife, sporting pleasures to cultural riches, and ancient history to cutting-edge technology. As an EU member, with one of the world's most advantageous tax systems and lowest crime rates in Europe, it is the perfect location for a second home, permanent residence or sound property investment, all at the buzzing crossroad of three continents.

## LIMASSOL

On the south coast of Cyprus, lies a city of diversity and urban seafront living. A hub of business, leisure and activity stretching along a 17km coastline of azure water and blue flag beaches. A safe haven for a relaxed pace of life in the island's most vibrant city. A home between mountains and sea. This is Limassol.



The Trilogy plot before development.



## • *Trilogy Limassol Seafront*

341, 28<sup>TH</sup> OCTOBER AVENUE

3106 LIMASSOL, CYPRUS



TRLOGY EDITION  
Gindi Collection Limassol











# MASTERPLAN

- 1. WEST TOWER**  
 - 67 apartments  
 - 52 offices

- Retreat (Levels 17 - 18)

Total area 1,289m<sup>2</sup>  
 Indoor area 655m<sup>2</sup>  
 Outdoor area 634m<sup>2</sup>

Level 17: multi-purpose function room, cinema room & lounge  
 Outdoor pool 8.5m x 7.5m, 64m<sup>2</sup>  
Level 18: gym, sauna, steam room & treatment area  
 Indoor pool 12m x 3.8m, 46m<sup>2</sup>

- 2. EAST TOWER**  
 - 125 apartments

- Retreat (Levels 11 - 12)

Total area 1,105m<sup>2</sup>  
 Indoor area 750m<sup>2</sup>  
 Outdoor area 355m<sup>2</sup>

Level 11: play & seating area, lounge & cinema room  
 Outdoor pool 11m x 5.5m, 60m<sup>2</sup>  
Level 12: gym, sauna, steam room & treatment area  
 Indoor pool 13m x 3.5m, 46m<sup>2</sup>

- 3. NORTH RESIDENCES**  
 - 76 apartments

- Retreat (Level 2)  
 Accessible to all residents  
 (including West & East Tower)

Total area 1,000m<sup>2</sup>  
 Gym & training area 150m<sup>2</sup>  
 Indoor pool 16m x 5.8m, 105m<sup>2</sup>  
 Treatment rooms & thermal spa across 280m<sup>2</sup> with steam bath, sauna, cold bucket shower, relaxation heated area, relaxation area

- 4. PRIVATE OASIS (6,700m<sup>2</sup>)**  
 - Adult swimming pool  
 - Pool bar  
 - Children's swimming pool  
 - Children's play area  
 - Landscaped gardens

- 5. PUBLIC PLAZA (6,850m<sup>2</sup>)**  
 - Drop-off zone opposite Trilogy managed beach  
 - Restaurants  
 - Cafés and bars  
 - Shops

- 6. PARKING**  
 - Private parking spaces: 581  
 - Public parking spaces: 312





I

## LIVE

*“Basking in this moment of beauty, I smiled to myself  
and realised this is exactly where I want to be.”*

Trilogy blends the aspirational dream of high-end beachfront living, with the sophistication of urban cool, with astonishing design flair and unsurpassed levels of finish. These are homes to be desired and coveted by many, but loved and lived in by the lucky few.



# YOUR SKY-RISE HAVEN

Each residence at Trilogy is a statement of discerning taste and understated wealth. Spectacular layouts are complemented with high standards of finish and sea views enjoyed by every apartment.

#### TRILOGY APARTMENTS

- Apartments of discerning taste
- Spectacular layouts and sea views
- High standards of quality and design
- Member access to resident-only areas
- 24-hour security and concierge
- Private underground parking

*Right:* Apartment living area looking out to the sea.  
*Bottom:* Bedroom interior with panoramic sea views.



#### EXQUISITE QUALITY

Trilogy offers a range of apartment types and sizes with direct views of the sea, ensuring there is a home for every taste. The remarkable coastal location, and architecture's exceptional vision, allow residents to enjoy beachfront living in a serene and relaxed environment. The apartment layouts lend themselves to a timeless lifestyle with flowing design, spacious living areas and carefully selected natural materials and finishes.

Large terraces extend the living room and main bedrooms, to celebrate the alfresco outdoor space of the undeniably enviable Cyprus climate. Three dedicated elevators, security, concierge, controlled access and a first-class parking facility come together to provide complete peace of mind and privacy.



# ELEGANT LUXURY

Created by Side to Side, the interior designers behind private island Skorpios and the Amara Hotel in Limassol.

The West Tower and East Tower apartments combine the finest Italian flair and German craftsmanship. Featuring Arclinea kitchens, designed by Antonio Citterio exclusively for Trilogy, they come complete with the timeless Gaggenau experience and other adorned world-renowned brands such as Bosch, Dornbracht and Villeroy & Boch.



Right: Apartment living area looking out to the sea.  
Bottom: Bathroom interior and kitchen







TRIOLOGY EDITION

Gindi Collection Limassol

# NORTH

RESIDENCES

*“Designed to embrace the Mediterranean way of living, the oasis homes at North Residences provide unrivalled access to the landscaped gardens and pools, with views of the upfront towers, the sea and the city of Limassol.”*







# APARTMENTS

Level 6-8

NORTH RESIDENCES (B)



What is shown in this plan, including furniture, accessories and measurements is for illustrative purposes only. The apartments sold by Girdi Global as part of this project were purchased by it from Tegy Umasol Sejahtera Ltd which builds the apartments and establishes the project.



# APARTMENTS

Level 6-8

NORTH RESIDENCES

## Apartment Size

119 m<sup>2</sup> residential

32.5 + 2.50 m<sup>2</sup> Covered Veranda

## Features

3 Bedrooms (1 Master Bedroom)

2 Bathrooms

1 Guest WC

Equipped kitchen



What is shown in this plan, including furniture, accessories and measurements is for illustrative purposes only. The apartments sold by Gindi Global as part of this project were purchased by it from Tokyo Umasaki Seichon Ltd which builds the apartments and establishes the project.



# APARTMENTS

Level 6-8

NORTH RESIDENCES

## Apartment Size

93 m<sup>2</sup> residential

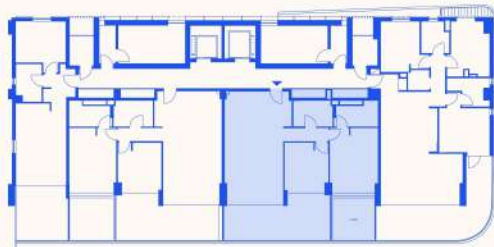
27 m<sup>2</sup> Covered Veranda

## Features

2 Bedrooms (1 Master Bedroom)

2 Bathrooms

Equipped kitchen



What is shown in this plan, including furniture, accessories and measurements is for illustrative purposes only. The apartments sold by Gindi Global as part of this project were purchased by it from Trilogy (Limassol Sector) Ltd which builds the apartments and establishes the project.



# APARTMENTS

Level 6-8

NORTH RESIDENCES

## Apartment Size

93 m<sup>2</sup> residential

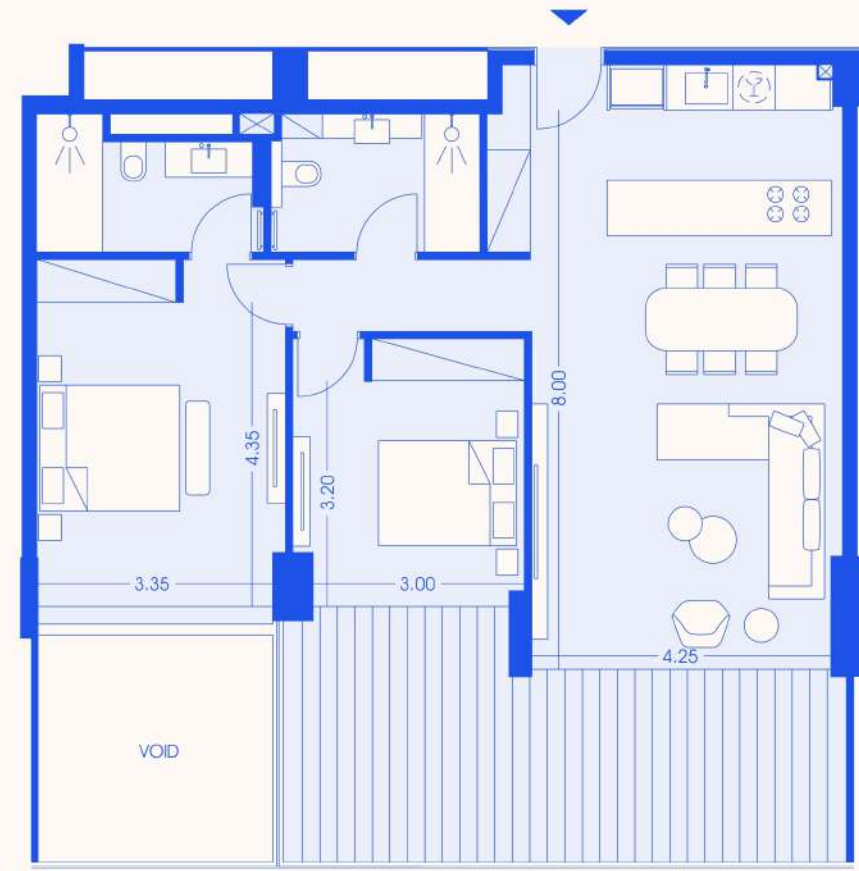
27 m<sup>2</sup> Covered Veranda

## Features

2 Bedrooms (1 Master Bedroom)

2 Bathrooms

Equipped kitchen



What is shown in this plan, including furniture, accessories and measurements is for illustrative purposes only. The apartments sold by Gind Global as part of the project were purchased by it from Tilogy Umassol Seaford Ltd which built the apartments and establishes the project.

# APARTMENTS

Level 6-8

NORTH RESIDENCES

## Apartment Size

57 m<sup>2</sup> residential

18 m<sup>2</sup> Covered Veranda

## Features

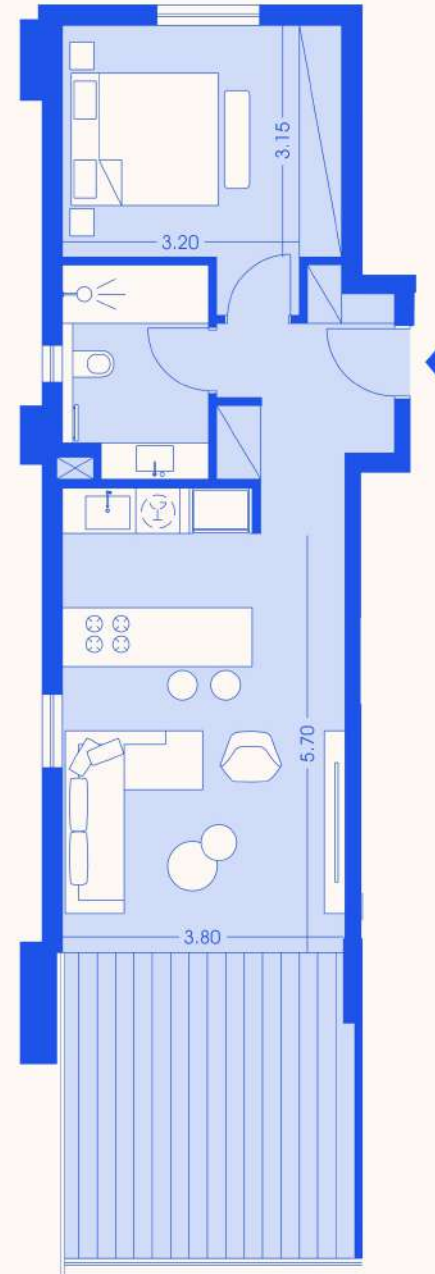
1 Bedrooms (1 Master Bedroom)

1 Bathroom

Equipped kitchen



What is shown in this plan, including furniture, accessories and measurements is for illustrative purposes only. The apartments sold by Gindi Global as part of this project were purchased by it from Tegy Umasol Seaton Ltd which built the apartments and established the project.

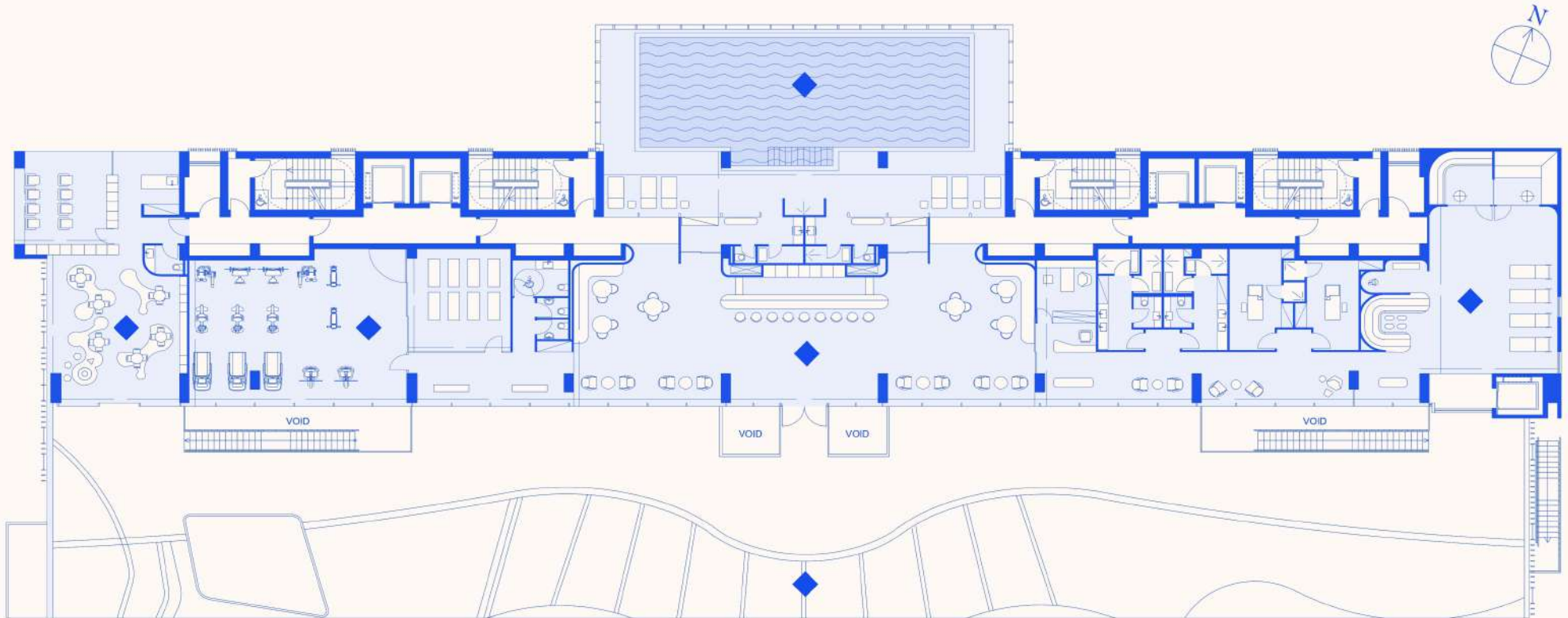




# RETREAT: SPA, CRÈCHE AND GYM

Oasis Level

NORTH RESIDENCES



What is shown in this plan, including furniture, accessories and measurements is for illustrative purposes only. The apartments sold by Gindi Global as part of this project were purchased by it from Mology (Umasol) Scotland Ltd which builds the apartments and establishes the project.

1. Indoor Pool
2. Crèche
3. Gym / Training Area
4. Residents' Lounge / Bar
5. Thermal Rooms & Thermal Spa Area
6. Private Oasis







II

## WORK

*“Gazing out into the uninterrupted Mediterranean Sea,  
I felt a sudden surge of pride in my own success.”*

Locating your business at Trilogy says a lot about its status and ambition. It's an epic location, a bold statement of creative spirit and geographical savvy, with unbroken sea views from every pane of heat-reflective glass. Fast digital connectivity is matched by convenient, real-world access to every corner of the globe.



## SUCCEED IN STYLE

### TRILOGY OFFICES

- State-of-the-art office space
- Sea views from every desk
- Fast digital connectivity
- 24-hour maintenance and access control
- 24-hour security and concierge
- Private underground parking



### OFFICE WITH A VIEW

There's room to work too, with impressive office space designed to exist seamlessly with the surrounding residential properties. Created to make the most of the location, yet still with a focus on connectivity and efficiency, the commercial floors offer companies one of the most spectacular addresses in the world.

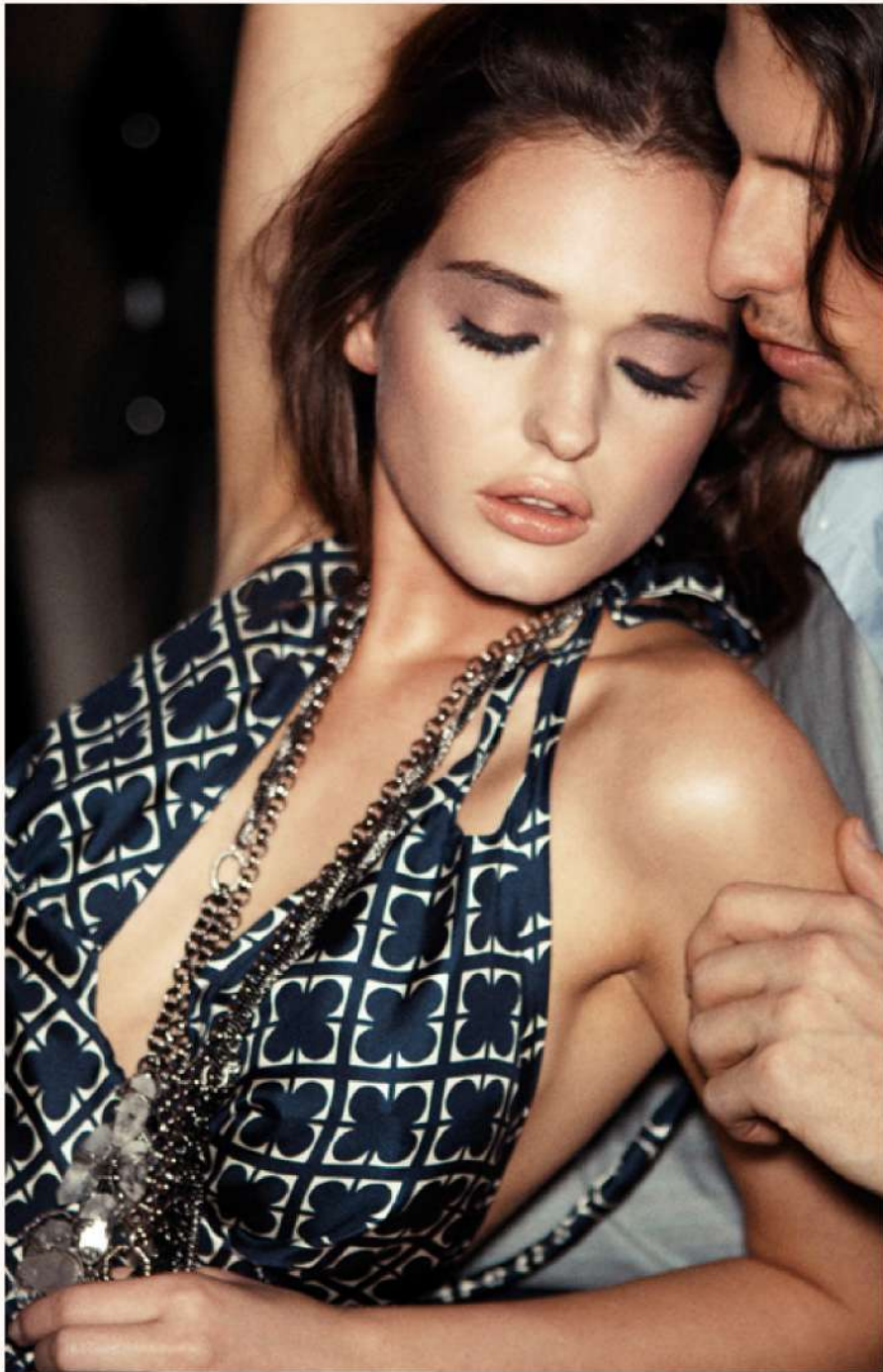
### WORK LIFESTYLE

Trilogy's exceptional commercial space boasts its own private lobby, four dedicated elevators, security and concierge services, with a standard of facilities that walk hand in hand with productivity and performance. Trilogy's offices ooze prestige, sophistication and credibility with their exclusive landmark address, functional workspace, stylish interiors and impressive range of facilities. A lifestyle destination to do business; with the beach and city centre at your doorstep.



*Top:* West Tower office interior.  
*Left:* The Public Plaza.





III

## PLAY

*“Closing my eyes, I can almost taste the crisp wine,  
rich foods and joyful laughter of the night ahead.”*

Trilogy has been just as thoughtfully considered on the outside. A breathtaking private pool, tennis court, children’s play area and tranquil gardens offer everyone a place to escape. And at the centre of it all, the beautiful plaza is home to fine restaurants, bars and shops: an inviting hub and the beating heart of this unique destination.

# STEP INTO THE OASIS

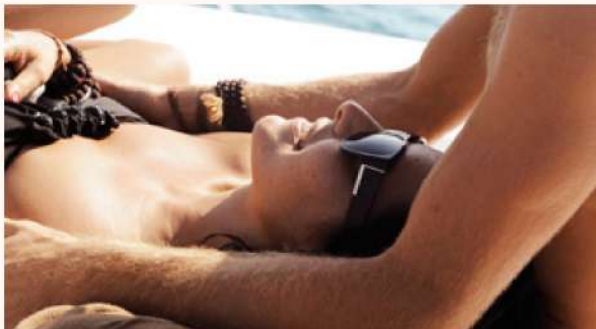
## LIMASSO L'S PARADISE

The Oasis is a private resident-only sanctuary, cradled by all three buildings, offering hours of relaxation or recreation under the clear blue sky. A fusion of tailor-made services and stunning outdoor facilities, create the perfect 'resort' experience just moments away from the city's seafront promenade.

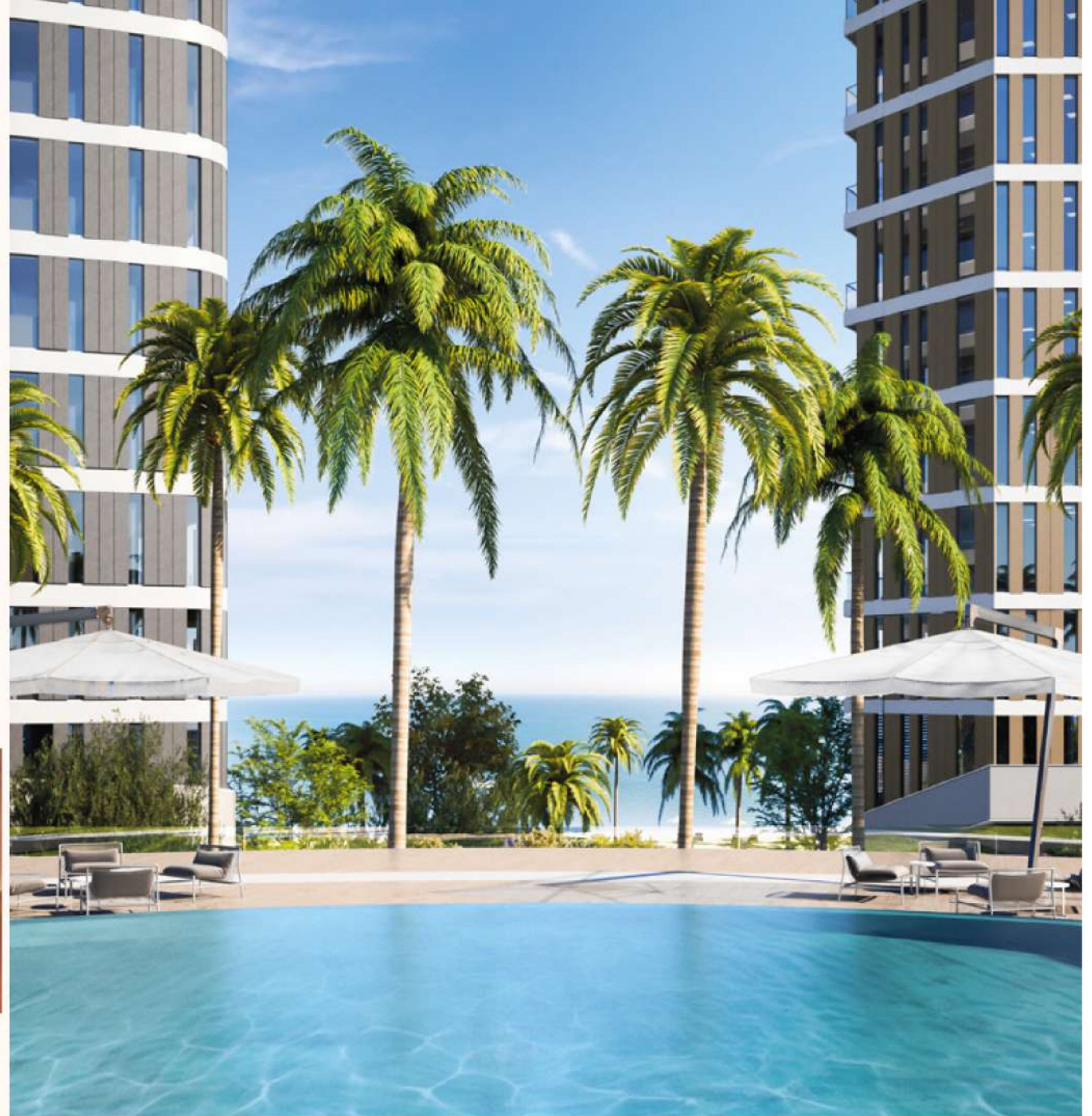
Whether in the mood for a game of tennis, a lazy day in the sun, quality time with your family or a brisk walk along the beach, this is the place to unwind or re-energise.

## PRIVATE OASIS

- Swimming pools
- Pool bar
- Children's play area
- Landscaped gardens



Right: View out to the sea from the Oasis pool.





# EMBRACE GLAMOUR



Left: Tables ready to be seated at one of Trilogy's fine restaurants.

## MORNING TO NIGHT

The Plaza is a bustling public space extending from the entrance of the development, to the centre of the two front towers. Restaurants, bars and shops combine to create a thriving hub that can be enjoyed by everyone, from dawn's first light to sundown and beyond.

Step out of your apartment or your office and catch up with family, friends or colleagues over a morning coffee, a light lunch, an early evening glass of wine and your favourite cuisine.

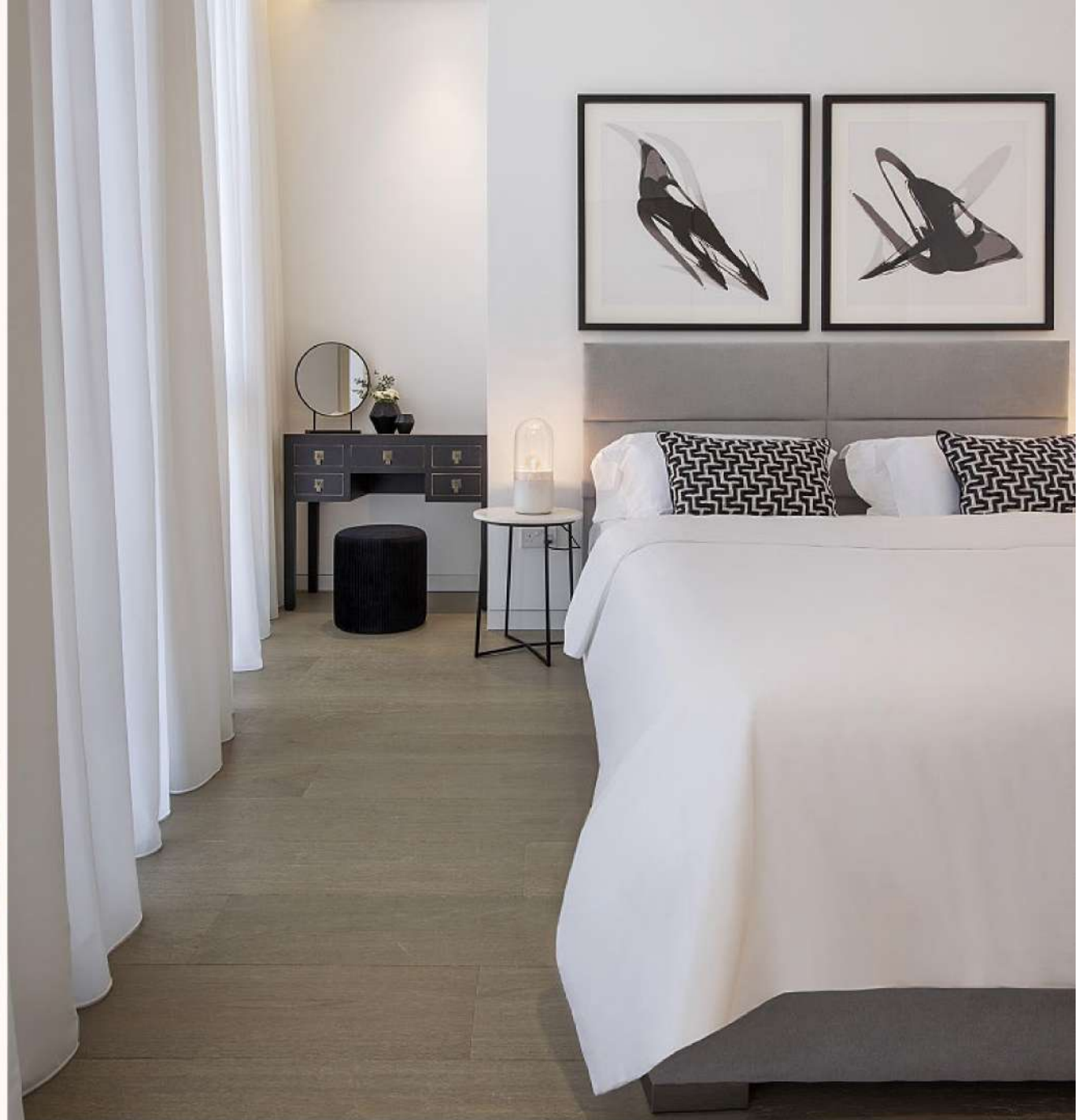
## PUBLIC PLAZA

- Restaurants
- Cafés and bars
- Shops



## HOTEL LIVING RENTALS, PROPERTY & LIFESTYLE MANAGEMENT

A dedicated on-site office with a team of 50 professionals, will offer 24/7 security and support to all Trilogy residents, tenants and guests. The central reception will oversee the management and maintenance of the destination's facilities and common areas, as well as undertaking all private service requests.









# SPECIFICATIONS

*“Trilogy is a family of three landmark buildings conceived with a common DNA in mind. Each one is unique and shares common genetic components with its siblings, linked into a single family group through a coherent architectural language.”*

## North Residences SPECIFICATIONS

### Floors

- The common areas on each floor will be finished in marble.
- The bedrooms will be finished with natural pre-varnished wood parquet with solid wood top layer.

### Doors and Windows

- The apartments main entrance doors will be anti-burglary and fireproof steel leaf structures, with paneling.
- All internal doors will be imported ready-made to be installed. The door frames will be of wooden block board lacquer finish, with rubber seals.
- All external doors leading to the terraces will be sliding coloured aluminium thermal frames with double low-energy glazing.
- Operable external windows will be double glazed aluminium.

### Wardrobes and Kitchen Cupboards

- The kitchen will have ceramic worktops and backsplashes.
- The bedroom wardrobes and kitchen cupboards will be imported, ready made for installation.

### Kitchen Appliances

- High quality imported white sanitary ware will be installed, complete with accessories.
- Wall mounted toilets with concealed cistern will be installed.
- Stainless steel sinks will be provided in the kitchens.
- Glazed cubicles will be provided for showers.

### Electrical Installations

- The entrance doors will be controlled via a video entry phone.
- TV points will be provided in the living areas and all bedrooms.
- Telephone lines with telephone sockets will be installed in the living area and all bedrooms.
- False ceiling spotlights will be provided.

### Electronic Home System

- An automated touch panel control lighting system will be provided.
- Full installation of individual security alarm system with motion detection sensors to control the apartments main entrance and terraces doors.
- Provision for electrical curtains.

### Cooling and Heating

- Each apartment will have a chiller unit which will be installed in the mechanical room of each floor, to provide cooling and heating.
- Underfloor heating with water will be installed, utilizing the heat from the chiller unit.

### Wall Finishes internal

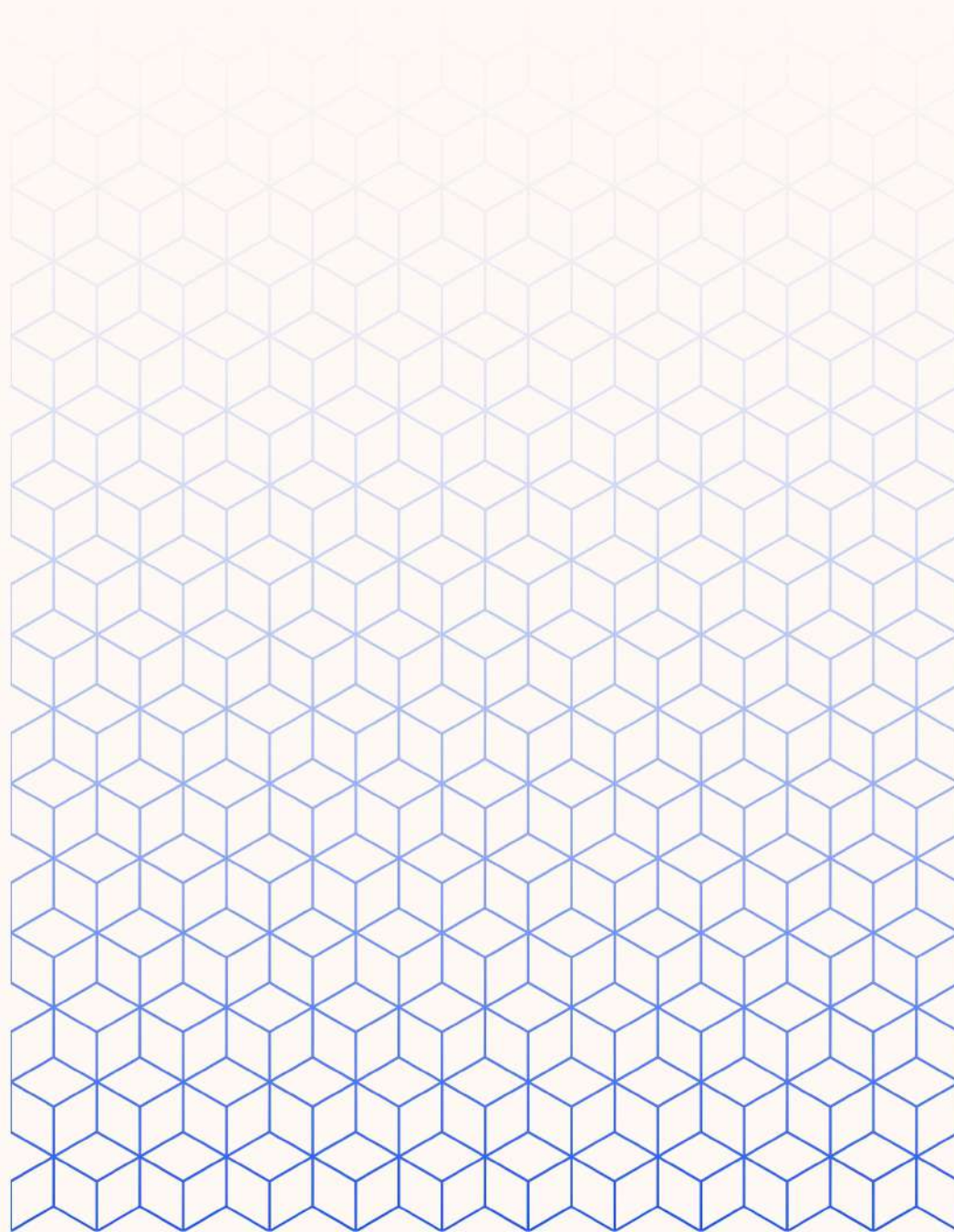
- The bathrooms will be lined with ceramic wall tiles up to a height of 2.65m.

The main points of these technical specifications do not constitute a presentation and/or an offer and will not form part of the terms of the sales agreement to be signed between the parties. The apartments sold as part of this project were purchased by the company known from Trilogy Linacast Scotland Ltd which builds the apartments and establishes the project.



---

The contents presented in this brochure are for marketing purposes only and do not constitute a binding offer towards anyone. Only a legally signed sales agreement between the selling company and the buyer will bind the parties. All information and images contained on the brochure are intended for impressions and general information purposes only, they do not constitute any commitment by "Gindi Global" and/or "Gindi Holdings", including in connection with specifications and plans, simulations, sizes, measurements, and any other element whatsoever. Without detracting from the aforementioned, photos, simulations, measurements, dimensions, furniture, electrical appliances, styling accessories, flooring and finishes are for the purpose of impression and illustrating the potential only, do not bind "Gindi Global" and/or "Gindi Holdings" and are not included in the sold apartment. This booklet includes design proposals, upgrades and raw materials that are not part of the plans and/or technical specifications that will be attached to the sales contract that will be signed between the buyer and the selling company. The buyer will not be allowed to make changes to the apartment and/or choose the finishes of the apartment. All the contents contained in this brochure, including contents in connection with the state of Cyprus and/or the city of Limassol, do not contain any recommendation or opinion, and are not intended to provide anything but general and marketing information and means of impression only. The person who makes use of the information and/or who makes his decisions based on the information, does so at his own risk, and he waives any demand and/or claim and/or claim against the selling company and/or "Gindi Global" and/or "Gindi Holdings" in everything related to and involving reliance on the information in this brochure.





# TRIOLOGY EDITION

Gindi Collection Limassol



[gindi-global.com](http://gindi-global.com)