



City Boutique

Gindi Collection Limassol





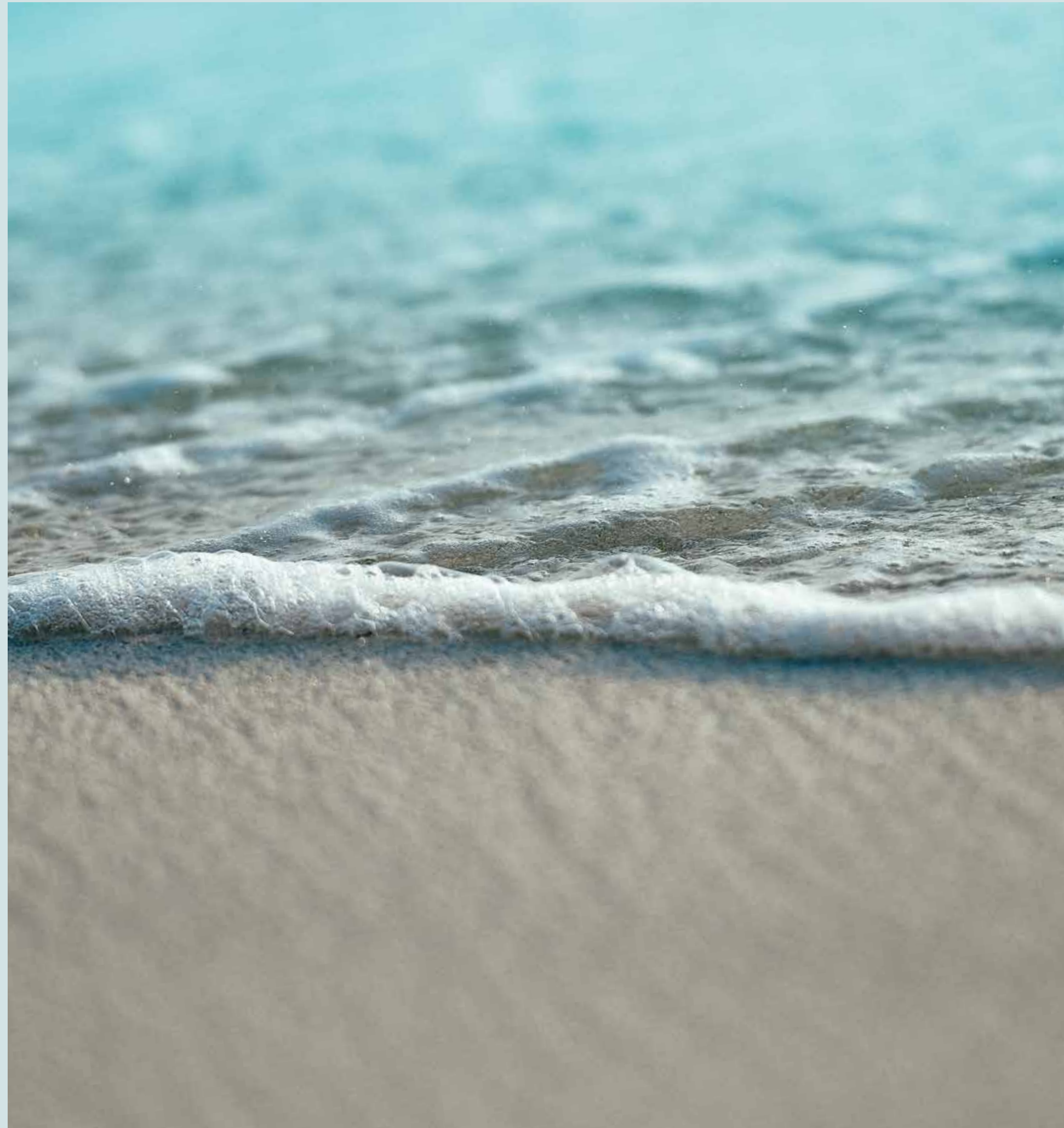
HEAVEN OF PEACE

City Boutique

Welcome to City Boutique, a premium new development set within the thriving heart of Limassol, offering a coastal living with an urban feeling.

With only 9 deluxe apartments this development combines an ideal residence and a perfect investment opportunity.

WELCOME TO THE HEART OF THE CITY.





LIFE, WELL DESIGNED



City Boutique

All images used are for illustrative purposes only, final outcome may differ from image shown.



LIMASSOL: THE CITY THAT HAS IT ALL



From sophisticated dining and stunning beaches to historical landmarks and adventurous hiking - welcome to Limassol, the city that has it all.

Relax on the beach - Lady's Mile, an 8km sandy beach, is a well-liked spot among locals with a salt-lake adding to its unique scenery.

Visit the old town - one of the most fascinating parts of the city to explore, with Limassol Castle on its main square.

Hike in the hills - discover the tiny village of Platres, a favored spot for nature-lovers, high up in the Troodos.

Discover new flavors - try the hip restaurants and cafés around the old town center, and at the contemporary marina.



City Boutique





CITY BOUTIQUE

UPSCALE LIVING

City Boutique

Meticulously designed with smart space arrangements that deliver pure comfort and style – the project offers premium aesthetics fused with elevated comfort and high functionality.

This new boutique ground-up development with spacious verandas offers the peaceful scenes of Limassol. The penthouses, with their exclusive rooftop terraces, provide sea views, all designed with elegant and well-planned layouts.



THE VERY HEART OF THE CITY

City Boutique

Just 700m away from the sea, with easy access to the main roads, the rest of the city and its amenities, you will always be just minutes from the best the city has to offer.

A great spot for urban living, well-designed.



AGIOS
ATHANASIOS

Four Seasons
Hotel

Dasoudi
Beach

City Boutique

5 Min from the sea

Chabad of
Limassol

TO PAPHOS
AIRPORT

CITY
CENTER

Municipal
Garden

MAKARIOS
AVENUE

OLD
TOWN

Limassol
Marina

My mall

City of
Dreams casino





CAREFULLY CHOSEN

City Boutique

- Modern architecture
- Spacious layouts
- Open plan Design
- VRV heating and cooling
- All master bedrooms with unsuited showers
- Zero Energy building/Class A Photovoltaics
- Quality bedroom cupboards
- Parking for tenants & visitors
- Dedicated storage room for each apartment





VARIETY OF CHOICES

FLAT	FLOOR	BEDROOMS	AREA (SQM)	STOREROOM	PARKING
101	1	2	111	1	1
102	1	2	112	1	1
103	1	2	101	1	1
201	2	2	95	1	1
202	2	2	93	1	1
203	2	2	97	1	1
301	3	MINI-PENTHOUSE	111	1	1
302	3	PENTHOUSE	185	1	1
303	3	PENTHOUSE	159	1	1

The areas stated above may slightly differ upon issuance of relevant authority permits



APARTMENT 101

2 Bedroom | Floor 1

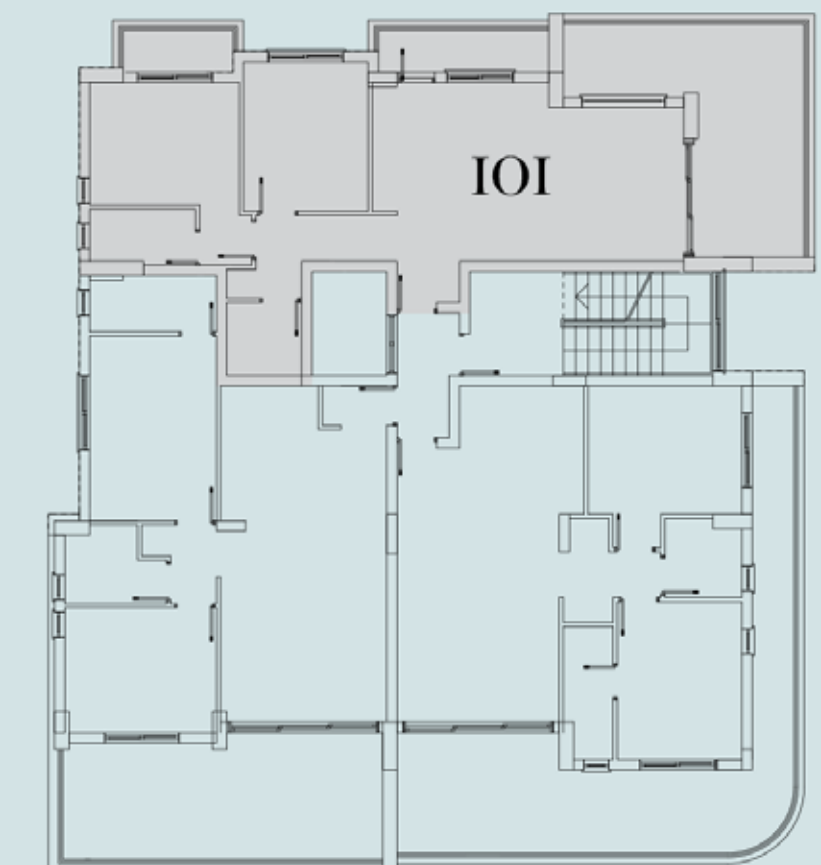
North-West-East

Covered internal area (sqm): 78

Covered veranda (sqm): 17

Uncovered garden (sqm): 16

City Boutique





APARTMENT 102

2 Bedroom | Floor 1

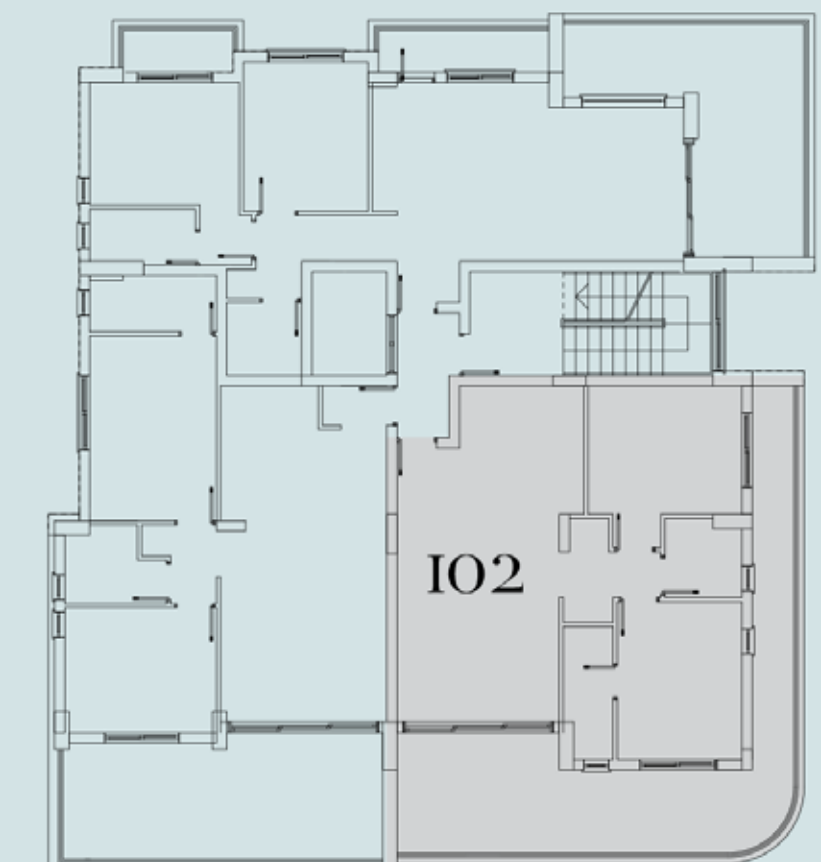
South-East

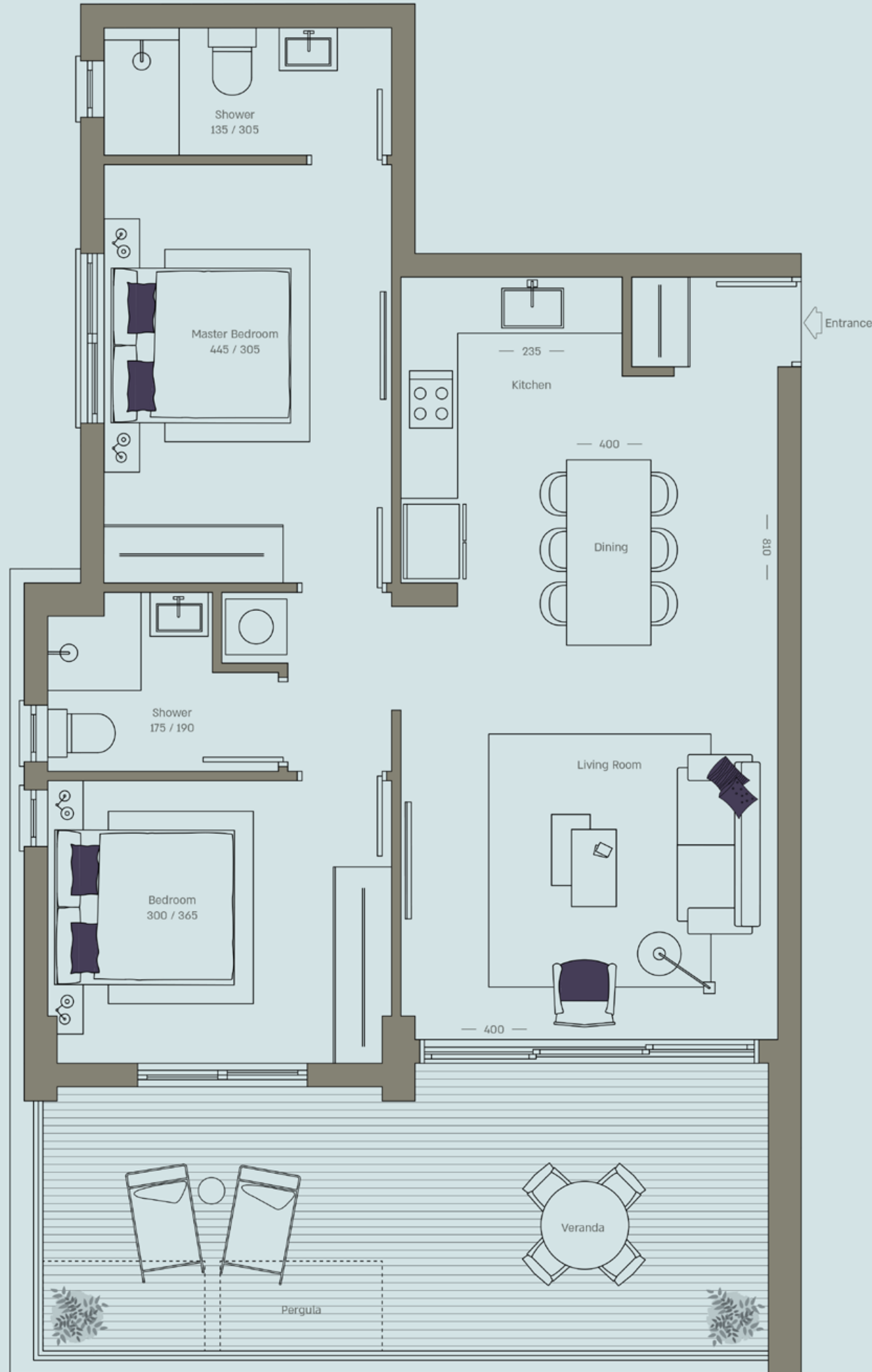
Covered internal area (sqm): 76

Covered veranda (sqm): 17

Uncovered veranda (sqm): 19

City Boutique





APARTMENT 103

2 Bedroom | Floor 1

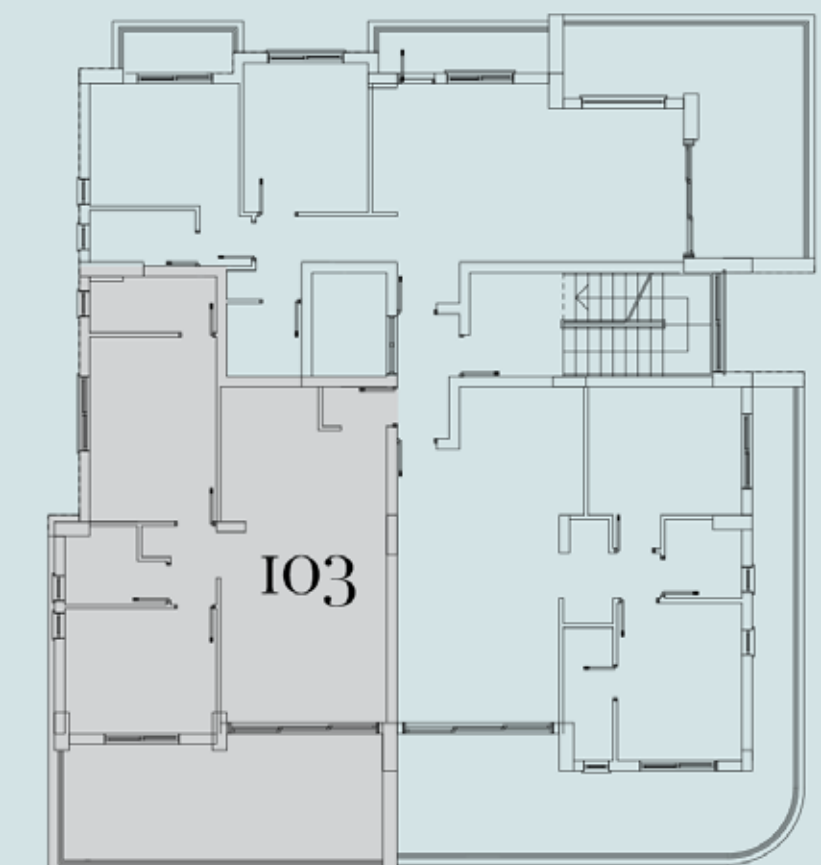
South-West

Covered internal area (sqm): 77

Covered veranda (sqm): 20

Uncovered veranda (sqm): 4

City Boutique





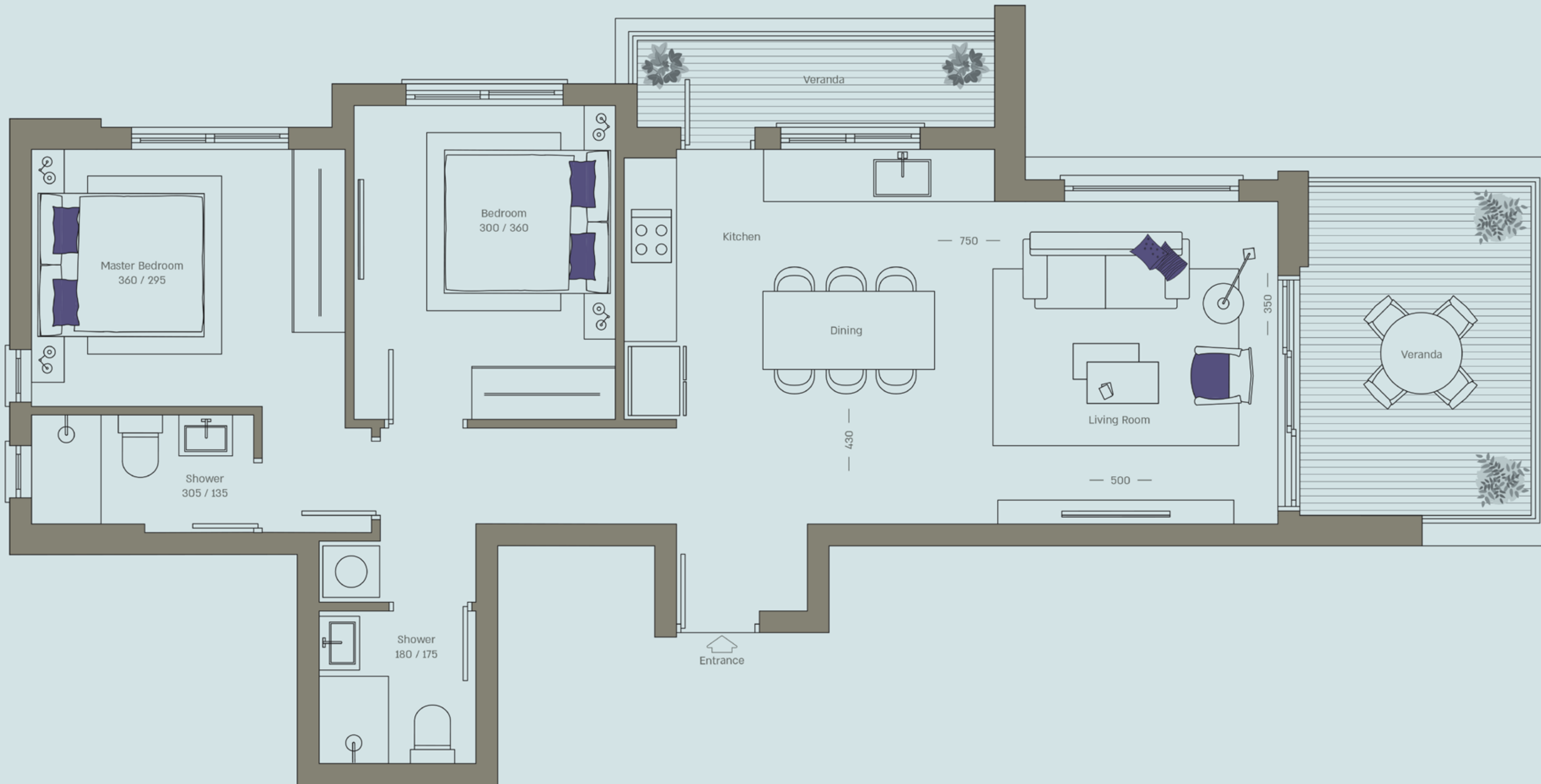
APARTMENT 201

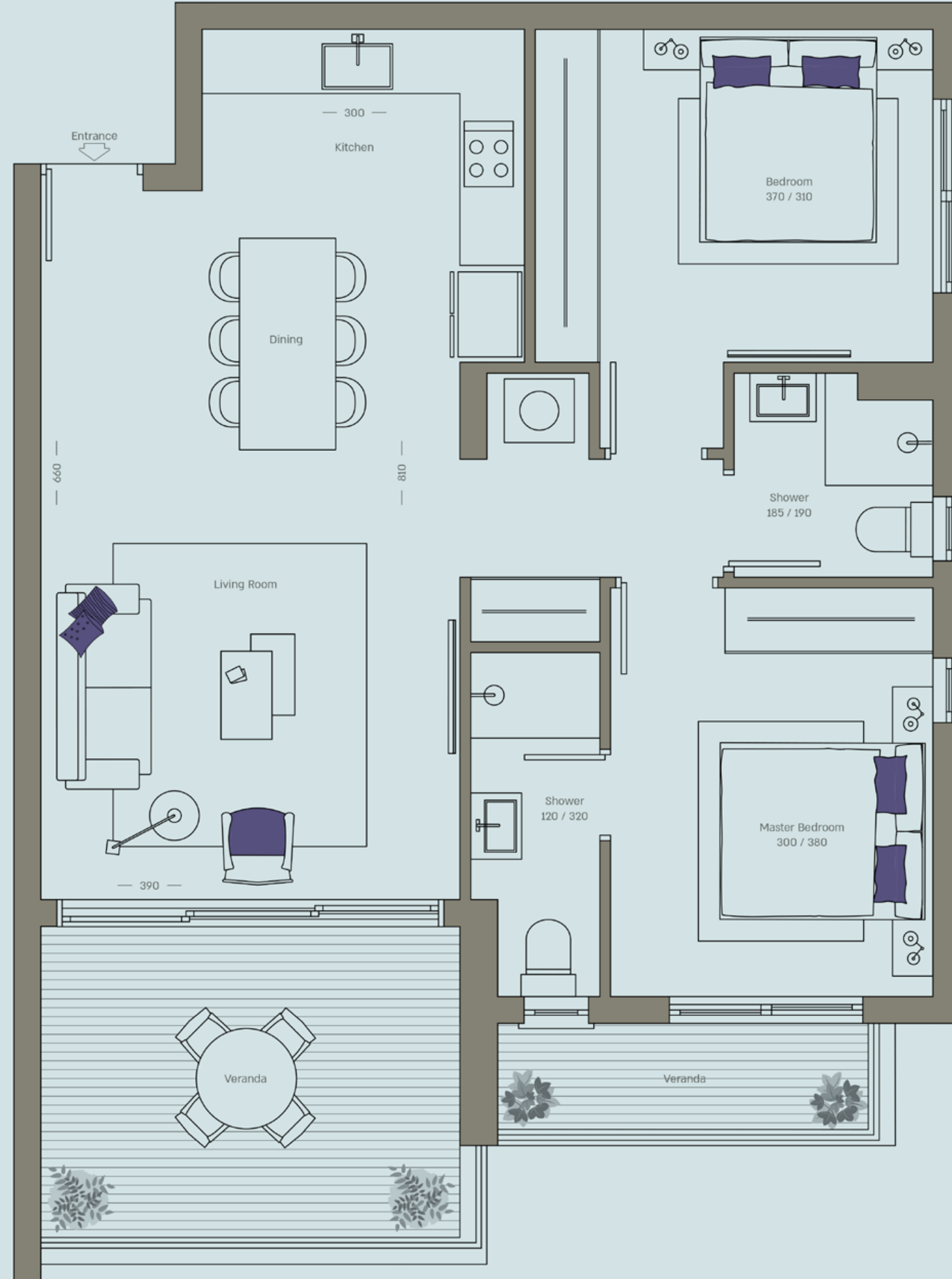
2 Bedroom | Floor 2

North-West--South

Covered internal area (sqm): 78

Covered veranda (sqm): 17





APARTMENT 202

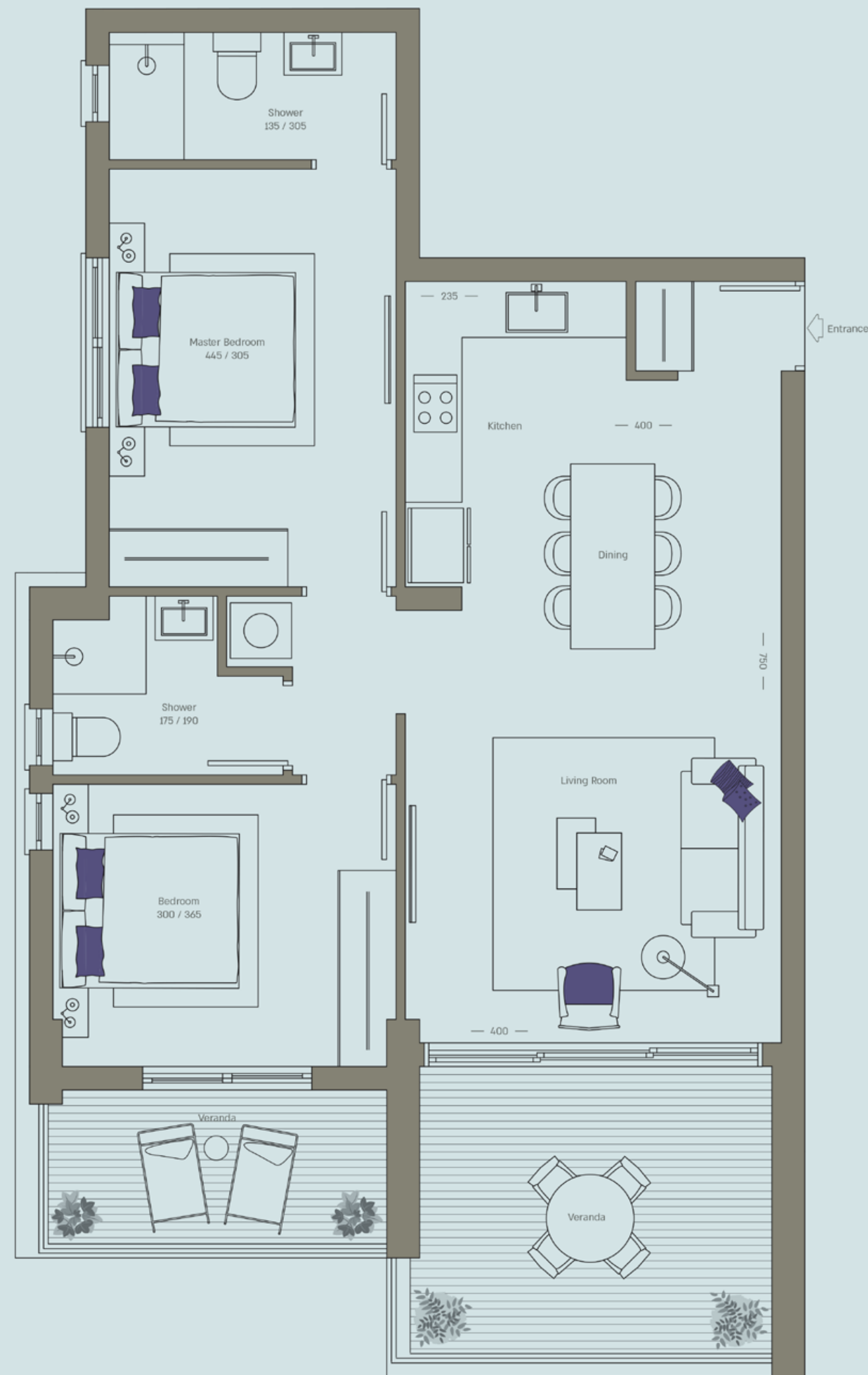
2 Bedroom | Floor 2

East-South

Covered internal area (sqm): 76

Covered veranda (sqm): 17





APARTMENT 203

2 Bedroom | Floor 2

West-South

Covered internal area (sqm): 77

Covered veranda (sqm): 20





APARTMENT 301

2 Bedroom | Floor 3

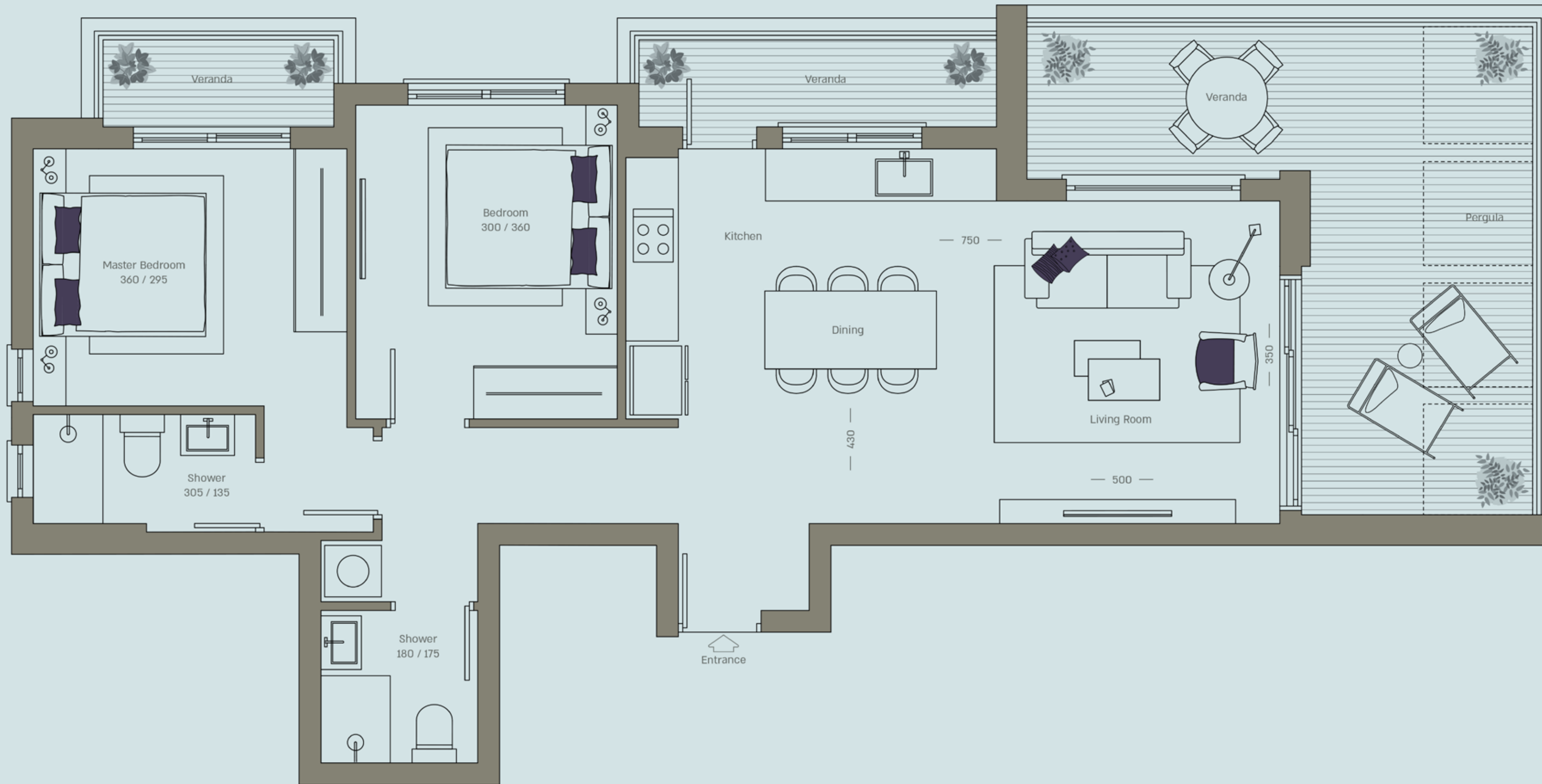
North-West-East

Covered internal area (sqm): 78

Covered veranda (sqm): 24

Uncovered garden (sqm): 9

City Boutique





PENTHOUSE 302

2 Bedroom | Floor 3

South-East

Covered internal area (sqm): 76

Covered veranda (sqm): 23

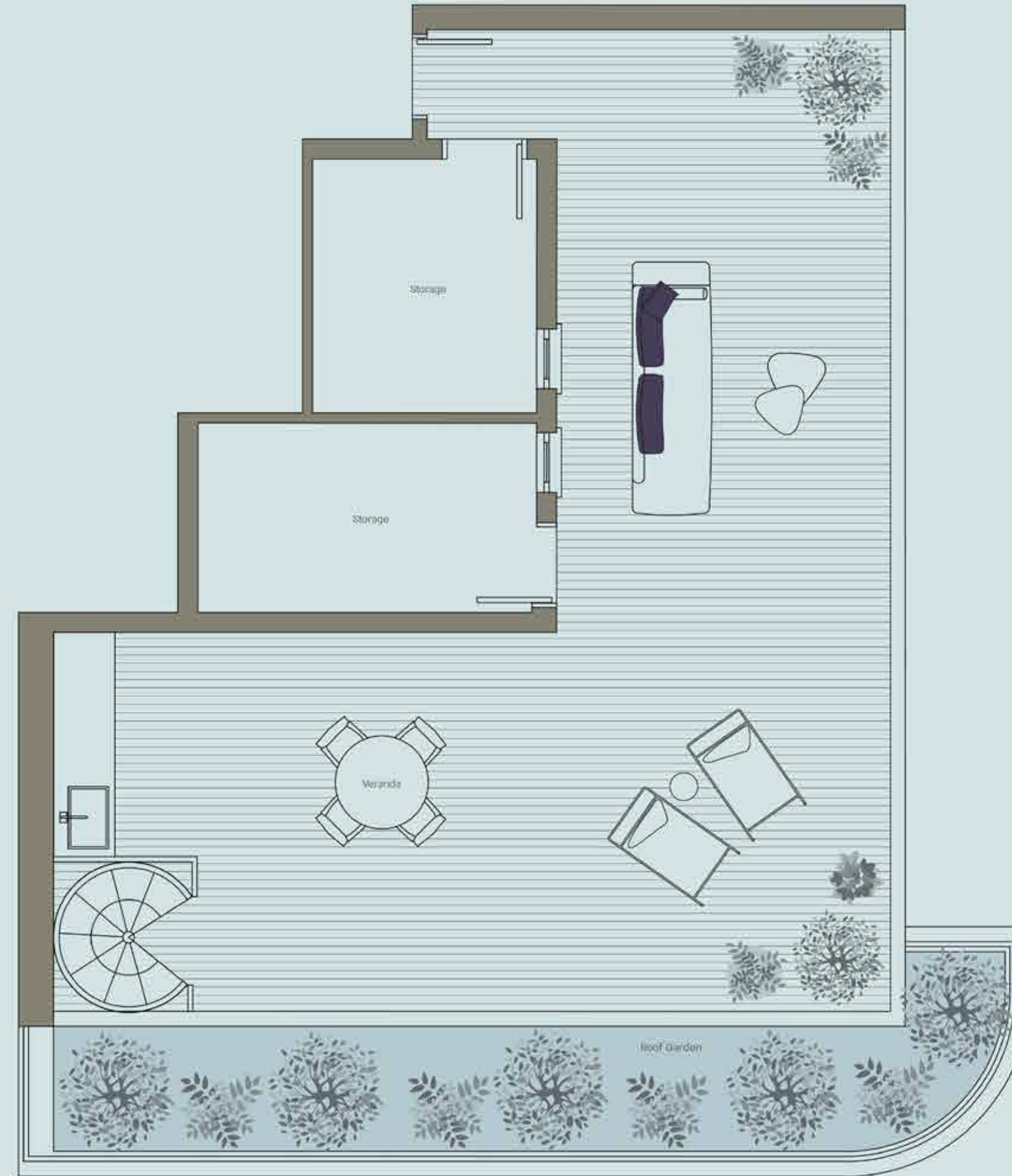
Uncovered garden (sqm): 13

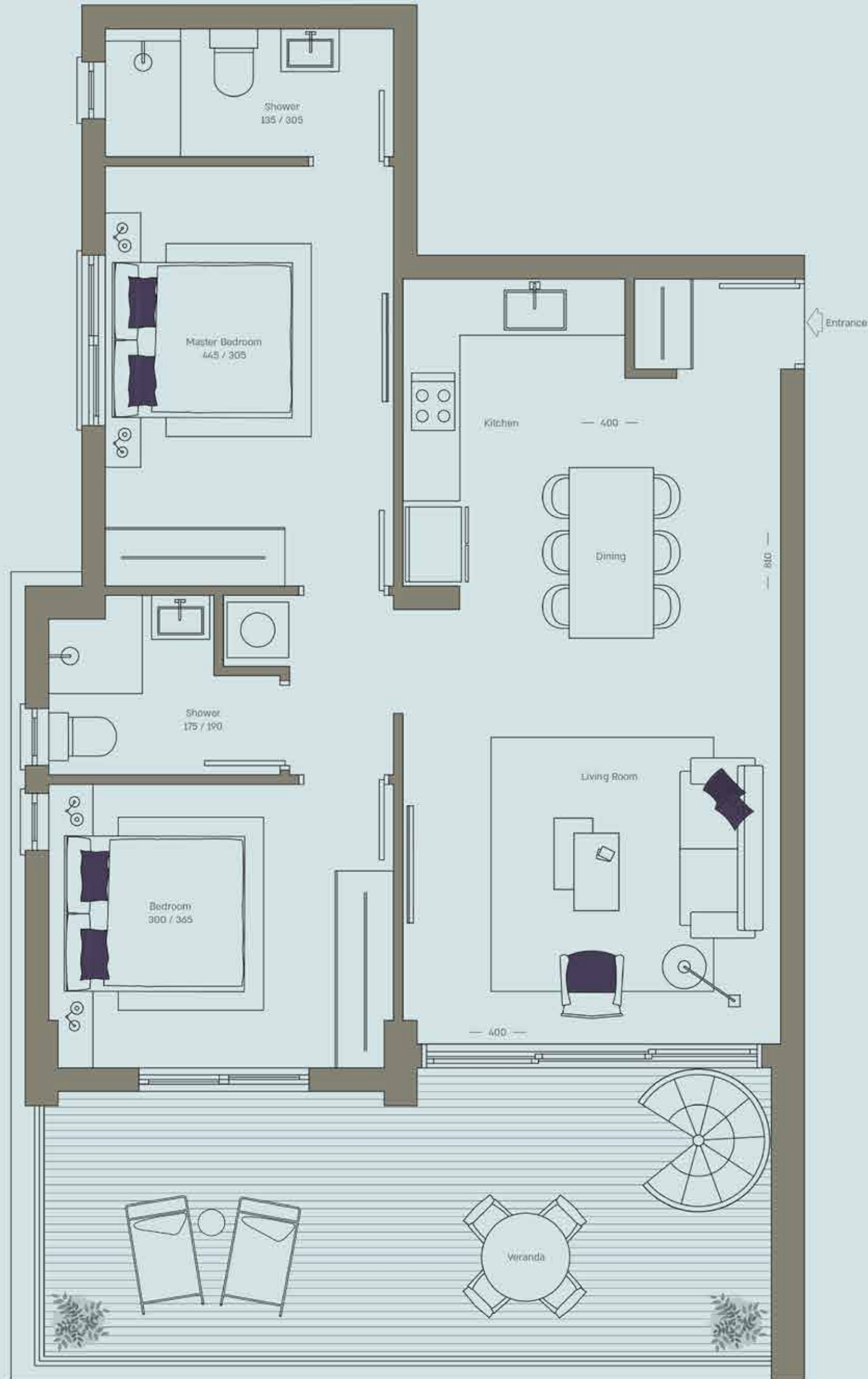
Roof Garden (sqm) : 72

Floor 3



Floor 4





Floor 4



PENTHOUSE 303

2 Bedroom | Floor 3

South-West

Covered internal area (sqm): 77

Covered veranda (sqm): 23

Roof Garden (sqm): 57





BEDROOM EXAMPLE

LIFE, WELL DESIGNED





PENTHOUSE ROOFTOP

LIFE, WELL DESIGNED



City Boutique



PENTHOUSE ROOFTOP

LIFE, WELL DESIGNED



City Boutique



THE TEAM



Gindi Global is Gindi Holdings' global investment arm. The company has a proven track record of developing unique, high-profile buildings that embrace the cultural heritage of each site to deliver beautifully designed, professionally developed, and incredibly well-managed establishments from conception to completion, while emphasizing positive impact and sustainability.

City Boutique



CGS Premier Development LTD provides Luxury Properties in the most sought-after areas of Limassol. CGS Premier is committed to delivering exceptional service to their clients, in each and every project. Over its many years of activity, the company has become a prominent brand in Cyprus, synonymous with high-end real estate.



CONTACT US

FOR ANY ENQUIRIES
OR PRIVATE VIEWINGS
PLEASE CONTACT US AT:

*5355 (IL) | 22 00 83 55 (CY)

info@gindi-global.com

