



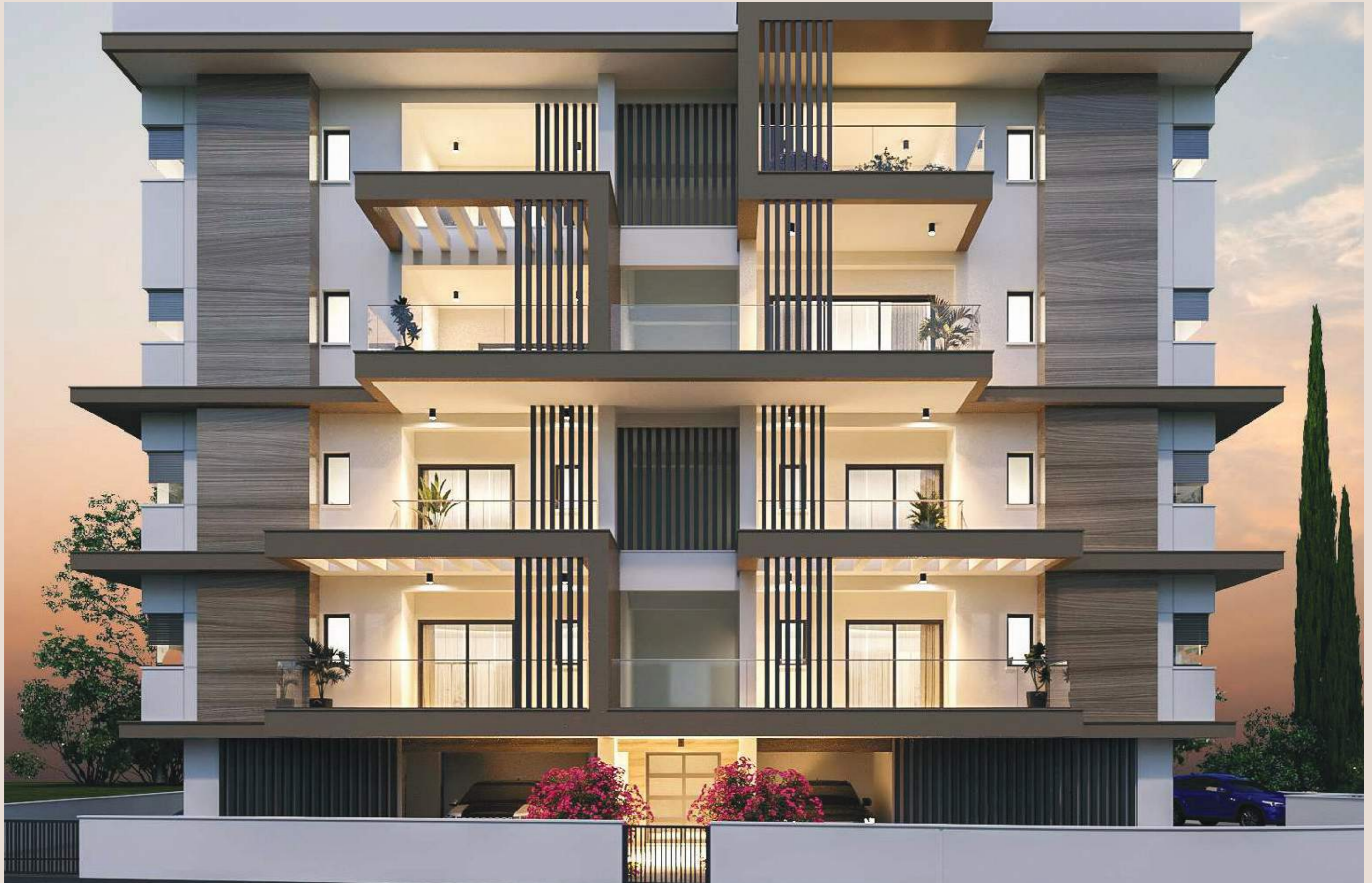
# BOUTIQUE LIVING LIMASSOL STYLE

Welcome to Skiathos Boutique Residence, a high-quality, stylish new development in the heart of Limassol.

Whether you are looking for a stylish new home or a smart investment opportunity, Skiathos Boutique Residence offers the perfect blend of style and practicality.

A BOUTIQUE LIFESTYLE, DESIGNED WITH YOU IN MIND.





All images used are for illustrative purposes only, final outcome may differ from image shown.



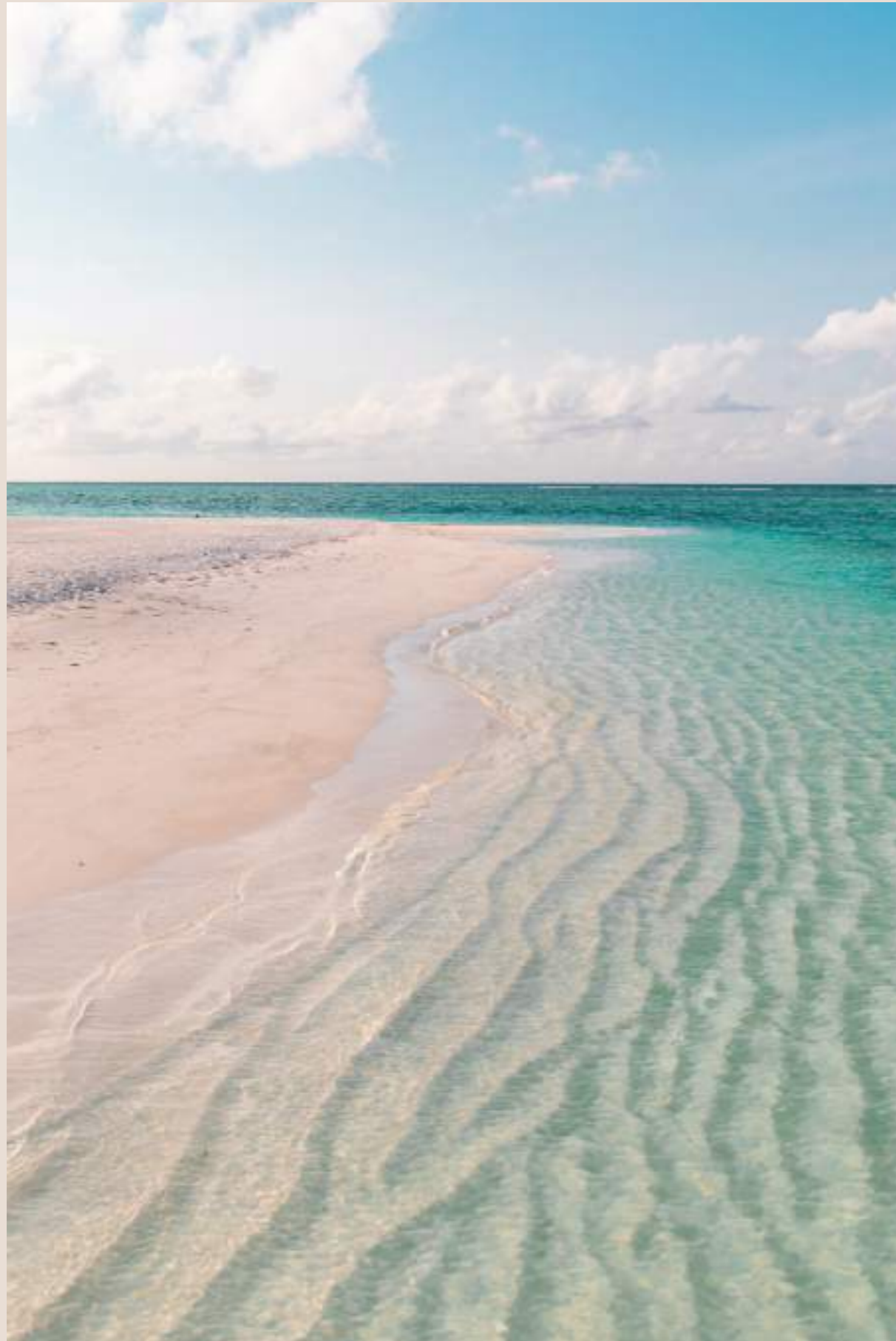
Skiathos Boutique



All images used are for illustrative purposes only, final outcome may differ from image shown.



# LIMASSOL: THE CITY THAT HAS IT ALL



From sophisticated dining and stunning beaches to historical landmarks and adventurous hiking - welcome to Limassol, the city that has it all.

**Relax on the beach** - Lady's Mile, an 8km sandy beach, is a well-liked spot among locals with a salt-lake adding to its unique scenery.

**Visit the old town** - one of the most fascinating parts of the city to explore, with Limassol Castle on its main square.

**Hike in the hills** - discover the tiny village of Platres, a favored spot for nature-lovers, high up in the Troodos.

**Discover new flavors** - try the hip restaurants and cafés around the old town center, and at the contemporary marina.



# SKIATHOS BOUTIQUE

## DESIGNED WITH YOU IN MIND

Skiathos Boutique



Skiathos Boutique is an elite gated contemporary development which consists of luxurious spacious apartments and penthouses with sophisticated design complimented with high standards of finish.

Each residence enjoys spacious verandas with city views, quiet surroundings and cosy planning solutions will pleasantly surprise those who value true comfort and style. The penthouses luxuriate in panoramic sea views accompanied with their own private roof terraces.

All images used are for illustrative purposes only, final outcome may differ from image shown.



# EVERYTHING JUST MINUTES AWAY

Experience Limassol in this prime location in the centric and quiet neighborhood of Mesa Geitonia, just 1,300m from the beach, with easy access to everything the city has to offer.

Everything is just minutes away, from fine-dining and shopping, to a walk by the sea. Easy access to the major roads makes it effortless to go exploring the rest of Limassol.





# SIGNATURE FINISHES



All images used are for illustrative purposes only, final outcome may differ from image shown.

Enjoy a range of high-end specs, including covered parking space for each apartment and lavish carpentry work. With the added security of a CCTV system, you can have peace of mind, knowing your home is perfectly protected.

Every apartment is delivered with top-standard signature finishes:

Laminate parquet  
in rooms

Quality ceramic tiles  
in bathrooms

Aluminum window  
frames

Stylish entrance  
doors

High-quality kitchen  
cabinets

Top sanitary brands





# MORE HIGH-END SPECS



- Modern architecture
- Spacious layouts
- Open plan Design
- VRV heating and cooling
- All master bedrooms with en-suite showers
- Zero Energy building/Class A Photovoltaics
- Quality bedroom cupboards
- Parking for tenants & visitors
- Dedicated storage room for each apartment

All images used are for illustrative purposes only, final outcome may differ from image shown.



# VARIETY OF CHOICES

FLAT	FLOOR	BEDROOMS	COVERED INTERNAL AREA (SQM)
101	1	1	50
102	1	2	78
103	1	2	78
104	1	1	50
201	2	1	50
202	2	2	80
203	2	2	80
204	2	1	50
301 SEA VIEW	3	3	110
302 SEA VIEW	3	2	77
303	3	2	77
401 SEA VIEW	4	3	110
402 SEA VIEW	4	3	111

COVERED VERANDA (SQM)	UNCOVERED/ROOF GARDEN (SQM)	PARKING
8	12	1
19	14	1
19	14	1
8	32	1
8	0	1
26	13	1
26	13	1
8	0	1
47	31	1
12	7	1
13	19	1
36	17 + 50 roof garden	1
32	37 + 30 roof garden	1

The areas stated above may slightly differ upon issuance of relevant authority permits



# 1 BEDROOM EXAMPLE



All images used are for illustrative purposes only, final outcome may differ from image shown.



# 1 BEDROOM EXAMPLE



All images used are for illustrative purposes only, final outcome may differ from image shown.



## 2 BEDROOM EXAMPLE



All images used are for illustrative purposes only, final outcome may differ from image shown.



## 2 BEDROOM EXAMPLE



All images used are for illustrative purposes only, final outcome may differ from image shown.



# PENTHOUSE 401



All images used are for illustrative purposes only, final outcome may differ from image shown.



# PENTHOUSE 401



All images used are for illustrative purposes only, final outcome may differ from image shown.



Skiathos Boutique







# PENTHOUSE 402



All images used are for illustrative purposes only, final outcome may differ from image shown.



# PENTHOUSE 402



Skiathos Boutique



All images used are for illustrative purposes only, final outcome may differ from image shown.



# ROOFTOP



All images used are for illustrative purposes only, final outcome may differ from image shown.



# ROOFTOP



All images used are for illustrative purposes only, final outcome may differ from image shown.



# THE TEAM



CGS Premier Development LTD provides Luxury Properties in the most sought-after areas of Limassol. CGS Premier is committed to delivering exceptional service to their clients, in each and every project. Over its many years of activity, the company has become a prominent brand in Cyprus, synonymous with high-end real estate.



Gindi Global is Gindi Holdings' global investment arm. The company has a proven track record of developing unique, high-profile buildings that embrace the cultural heritage of each site to deliver beautifully designed, professionally developed, and incredibly well-managed establishments from conception to completion, while emphasizing positive impact and sustainability.

# CONTACT US

for any enquiries or private viewings please contact us at:

\*5355

[info@gindi-global.com](mailto:info@gindi-global.com)